

Let Coverage:
 Existing floor area: 2095 s.f.
 Proposed floor area: 4238 s.f. (6,143.2 sq. ft. allowed)

Building Coverage:
 Existing: 12.4%
 Proposed: 26.6%
Total Lot Coverage:
 Existing: 25.3%
 Proposed: 42.1%

Grading Summary:
 0 CY Cut, 0 CY Fill, under house and garage
 0 CY Cut, 43 CY Fill, for landscape items
 0 CY Cut, 0 CY Fill, for all other yard areas
 0 CY excavatory, 0 CY backfill
 Max. Cut/Fill Depth: 3'-0" Report: 45-CV

In new construction, required smoke alarms shall receive their primary power from the building wiring, which shall be provided from a central power source. The building wiring shall be protected from a central power source by a branch-circuit overcurrent protection device. Smoke alarms shall be interconnected in a hardwired, low-voltage electrical system. Smoke alarms shall emit a signal when the battery and low-battery indicators are activated.

Prior to building permit final approval, the property shall be in compliance with the vegetation ordinance presented in California Public Resources Code Section 4397, California Government Code Section 51182, and the code. Residential Code H27.7.1.2

Fire Department Plan Check Notes:

1. The required fire flow for the hydrants at this location is 1,720 gpm. at 20 psi residual pressure for a duration of 2 hours over and above the maximum daily domestic demand. Fire flow shall be provided in accordance with the California Fire Code 901.2. Fire flow shall be provided in accordance with the California Fire Code 901.2. Fire flow shall be provided in accordance with the California Fire Code 901.2.

2. Stacking of fire hydrants shall be in accordance with the California Fire Code 901.2. Fire flow shall be provided in accordance with the California Fire Code 901.2. Fire flow shall be provided in accordance with the California Fire Code 901.2.

3. All fire hydrants shall be in accordance with the California Fire Code 901.2. Fire flow shall be provided in accordance with the California Fire Code 901.2. Fire flow shall be provided in accordance with the California Fire Code 901.2.

4. At least one egress door shall be provided for each dwelling unit. The egress door shall be in accordance with the California Fire Code 901.2. Fire flow shall be provided in accordance with the California Fire Code 901.2. Fire flow shall be provided in accordance with the California Fire Code 901.2.

5. The required fire flow for the hydrants at this location is 1,720 gpm. at 20 psi residual pressure for a duration of 2 hours over and above the maximum daily domestic demand. Fire flow shall be provided in accordance with the California Fire Code 901.2. Fire flow shall be provided in accordance with the California Fire Code 901.2. Fire flow shall be provided in accordance with the California Fire Code 901.2.

6. The required fire flow for the hydrants at this location is 1,720 gpm. at 20 psi residual pressure for a duration of 2 hours over and above the maximum daily domestic demand. Fire flow shall be provided in accordance with the California Fire Code 901.2. Fire flow shall be provided in accordance with the California Fire Code 901.2. Fire flow shall be provided in accordance with the California Fire Code 901.2.

7. The required fire flow for the hydrants at this location is 1,720 gpm. at 20 psi residual pressure for a duration of 2 hours over and above the maximum daily domestic demand. Fire flow shall be provided in accordance with the California Fire Code 901.2. Fire flow shall be provided in accordance with the California Fire Code 901.2. Fire flow shall be provided in accordance with the California Fire Code 901.2.

8. The required fire flow for the hydrants at this location is 1,720 gpm. at 20 psi residual pressure for a duration of 2 hours over and above the maximum daily domestic demand. Fire flow shall be provided in accordance with the California Fire Code 901.2. Fire flow shall be provided in accordance with the California Fire Code 901.2. Fire flow shall be provided in accordance with the California Fire Code 901.2.

9. The required fire flow for the hydrants at this location is 1,720 gpm. at 20 psi residual pressure for a duration of 2 hours over and above the maximum daily domestic demand. Fire flow shall be provided in accordance with the California Fire Code 901.2. Fire flow shall be provided in accordance with the California Fire Code 901.2. Fire flow shall be provided in accordance with the California Fire Code 901.2.

10. The required fire flow for the hydrants at this location is 1,720 gpm. at 20 psi residual pressure for a duration of 2 hours over and above the maximum daily domestic demand. Fire flow shall be provided in accordance with the California Fire Code 901.2. Fire flow shall be provided in accordance with the California Fire Code 901.2. Fire flow shall be provided in accordance with the California Fire Code 901.2.

11. The required fire flow for the hydrants at this location is 1,720 gpm. at 20 psi residual pressure for a duration of 2 hours over and above the maximum daily domestic demand. Fire flow shall be provided in accordance with the California Fire Code 901.2. Fire flow shall be provided in accordance with the California Fire Code 901.2. Fire flow shall be provided in accordance with the California Fire Code 901.2.

12. The required fire flow for the hydrants at this location is 1,720 gpm. at 20 psi residual pressure for a duration of 2 hours over and above the maximum daily domestic demand. Fire flow shall be provided in accordance with the California Fire Code 901.2. Fire flow shall be provided in accordance with the California Fire Code 901.2. Fire flow shall be provided in accordance with the California Fire Code 901.2.

13. The required fire flow for the hydrants at this location is 1,720 gpm. at 20 psi residual pressure for a duration of 2 hours over and above the maximum daily domestic demand. Fire flow shall be provided in accordance with the California Fire Code 901.2. Fire flow shall be provided in accordance with the California Fire Code 901.2. Fire flow shall be provided in accordance with the California Fire Code 901.2.

14. The required fire flow for the hydrants at this location is 1,720 gpm. at 20 psi residual pressure for a duration of 2 hours over and above the maximum daily domestic demand. Fire flow shall be provided in accordance with the California Fire Code 901.2. Fire flow shall be provided in accordance with the California Fire Code 901.2. Fire flow shall be provided in accordance with the California Fire Code 901.2.

15. The required fire flow for the hydrants at this location is 1,720 gpm. at 20 psi residual pressure for a duration of 2 hours over and above the maximum daily domestic demand. Fire flow shall be provided in accordance with the California Fire Code 901.2. Fire flow shall be provided in accordance with the California Fire Code 901.2. Fire flow shall be provided in accordance with the California Fire Code 901.2.

16. The required fire flow for the hydrants at this location is 1,720 gpm. at 20 psi residual pressure for a duration of 2 hours over and above the maximum daily domestic demand. Fire flow shall be provided in accordance with the California Fire Code 901.2. Fire flow shall be provided in accordance with the California Fire Code 901.2. Fire flow shall be provided in accordance with the California Fire Code 901.2.

17. The required fire flow for the hydrants at this location is 1,720 gpm. at 20 psi residual pressure for a duration of 2 hours over and above the maximum daily domestic demand. Fire flow shall be provided in accordance with the California Fire Code 901.2. Fire flow shall be provided in accordance with the California Fire Code 901.2. Fire flow shall be provided in accordance with the California Fire Code 901.2.

18. The required fire flow for the hydrants at this location is 1,720 gpm. at 20 psi residual pressure for a duration of 2 hours over and above the maximum daily domestic demand. Fire flow shall be provided in accordance with the California Fire Code 901.2. Fire flow shall be provided in accordance with the California Fire Code 901.2. Fire flow shall be provided in accordance with the California Fire Code 901.2.

19. The required fire flow for the hydrants at this location is 1,720 gpm. at 20 psi residual pressure for a duration of 2 hours over and above the maximum daily domestic demand. Fire flow shall be provided in accordance with the California Fire Code 901.2. Fire flow shall be provided in accordance with the California Fire Code 901.2. Fire flow shall be provided in accordance with the California Fire Code 901.2.

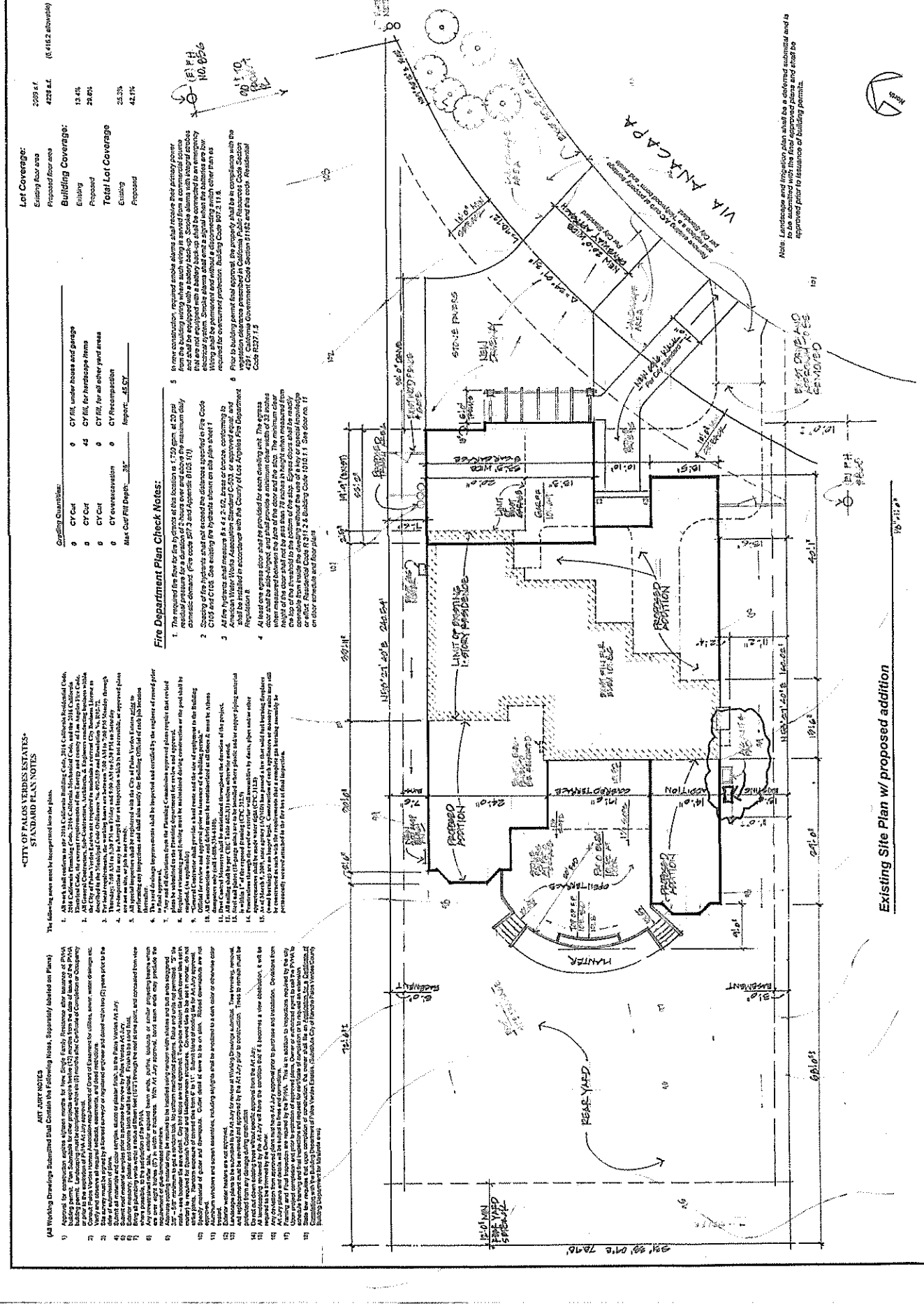
20. The required fire flow for the hydrants at this location is 1,720 gpm. at 20 psi residual pressure for a duration of 2 hours over and above the maximum daily domestic demand. Fire flow shall be provided in accordance with the California Fire Code 901.2. Fire flow shall be provided in accordance with the California Fire Code 901.2. Fire flow shall be provided in accordance with the California Fire Code 901.2.

21. The required fire flow for the hydrants at this location is 1,720 gpm. at 20 psi residual pressure for a duration of 2 hours over and above the maximum daily domestic demand. Fire flow shall be provided in accordance with the California Fire Code 901.2. Fire flow shall be provided in accordance with the California Fire Code 901.2. Fire flow shall be provided in accordance with the California Fire Code 901.2.

22. The required fire flow for the hydrants at this location is 1,720 gpm. at 20 psi residual pressure for a duration of 2 hours over and above the maximum daily domestic demand. Fire flow shall be provided in accordance with the California Fire Code 901.2. Fire flow shall be provided in accordance with the California Fire Code 901.2. Fire flow shall be provided in accordance with the California Fire Code 901.2.

23. The required fire flow for the hydrants at this location is 1,720 gpm. at 20 psi residual pressure for a duration of 2 hours over and above the maximum daily domestic demand. Fire flow shall be provided in accordance with the California Fire Code 901.2. Fire flow shall be provided in accordance with the California Fire Code 901.2. Fire flow shall be provided in accordance with the California Fire Code 901.2.

24. The required fire flow for the hydrants at this location is 1,720 gpm. at 20 psi residual pressure for a duration of 2 hours over and above the maximum daily domestic demand. Fire flow shall be provided in accordance with the California Fire Code 901.2. Fire flow shall be provided in accordance with the California Fire Code 901.2. Fire flow shall be provided in accordance with the California Fire Code 901.2.



Note: Landscape and site plan shall be a certified submittal and to be submitted to the Planning Department for review and final approval prior to issuance of building permits.

10'-11"

10'-11"

10'-11"

10'-11"

10'-11"

10'-11"

10'-11"

10'-11"

10'-11"

10'-11"

10'-11"

10'-11"

10'-11"

10'-11"

10'-11"

10'-11"

10'-11"

10'-11"

10'-11"

10'-11"

10'-11"

10'-11"

10'-11"

10'-11"

10'-11"

10'-11"

10'-11"

10'-11"

10'-11"

