

969 VIA RINCON
LOT 2A BLK-1634

SITE PLAN

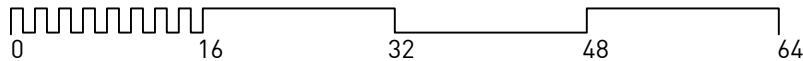
981 VIA RINCON, PALOS VERDES ESTATES, CA 90274

dLR Design Inc.
2040 LOMITA BLVD., SUITE 104,
LOMITA, CA, 90717
1.310.972.9050

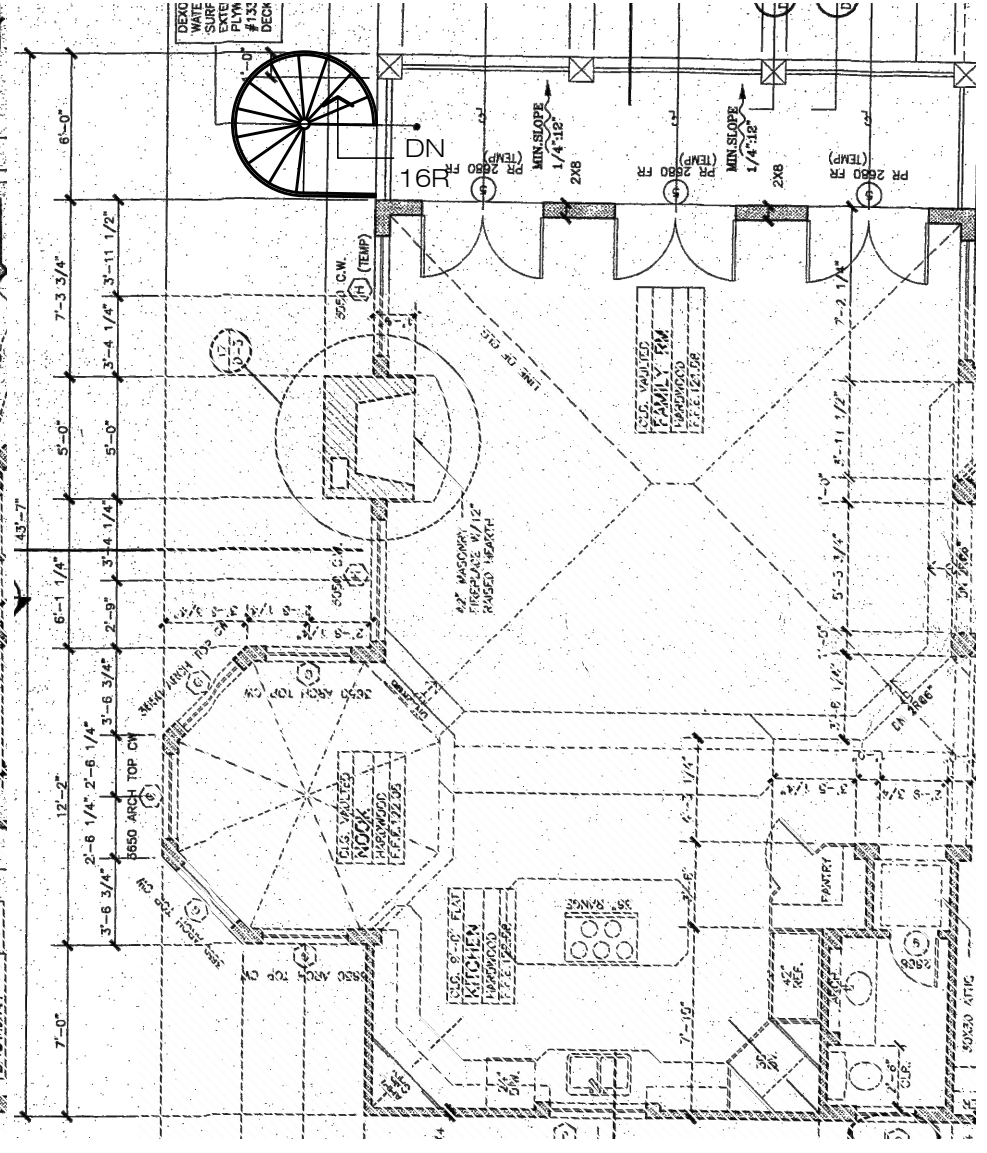
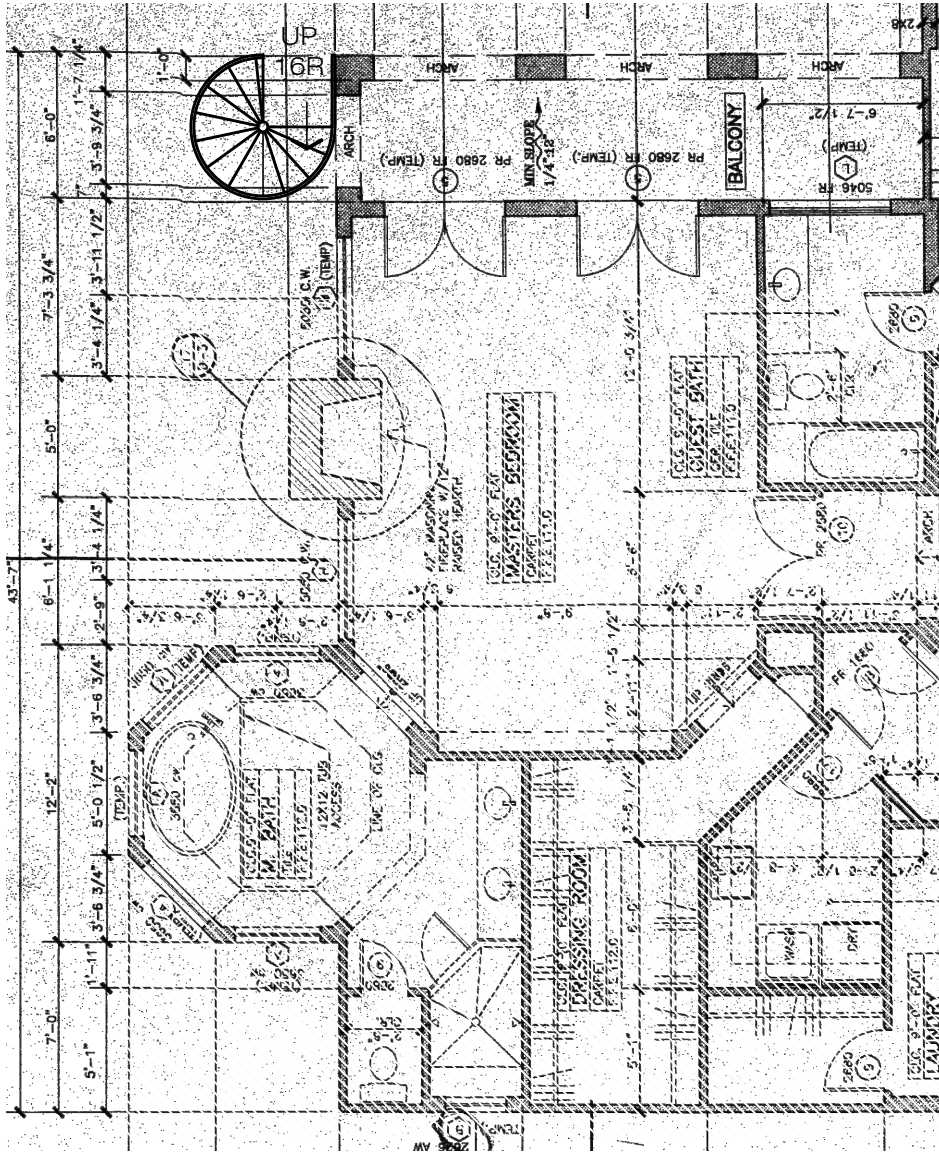
981 VIA RINCON

APPLICANT / DEVELOPER
LUIGI SCHIAPPA DEVELOPMENT, INC.
2040 LOMITA BLVD., SUITE 100
LOMITA, CA 90717
310.373.9555
luigi@schiappadev.com

SCALE: 1/16" = 1'-0"



A1.0
DATE: May 12, 2021



1 1ST FLOOR PLAN
1/8"=1'-0"

2 2ND FLOOR PLAN
1/8"=1'-0"

1ST & 2ND FLOOR PLANS

981 VIA RINCON, PALOS VERDES ESTATES, CA 90274

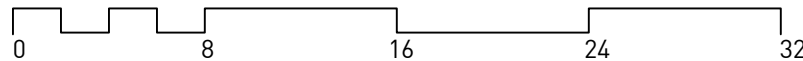
dLR Design Inc.
2040 Lomita Blvd., Suite 104,
Lomita, CA, 90717
1.310.972.9050



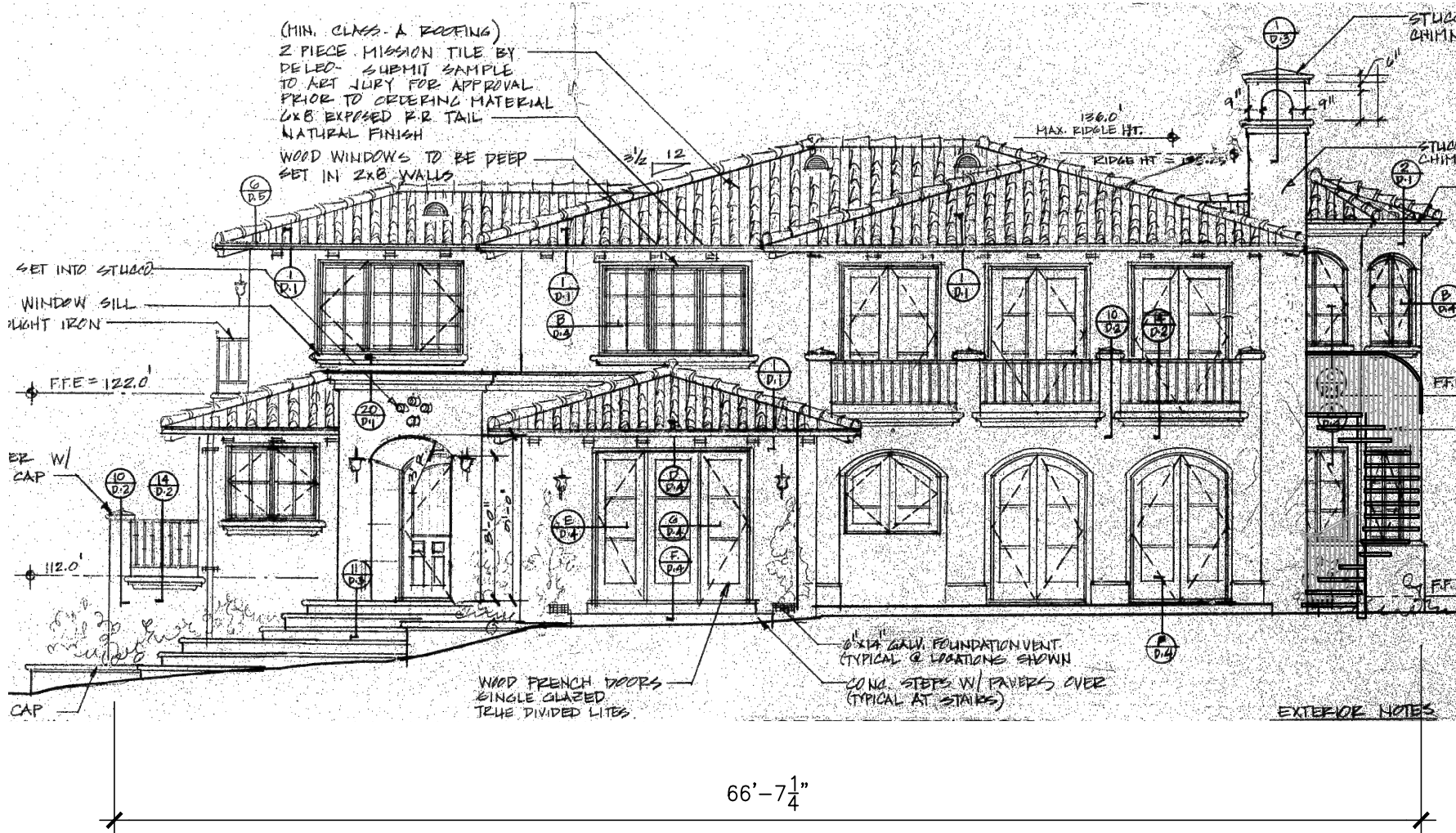
981 VIA RINCON

APPLICANT / DEVELOPER
LUIGI SCHIAPPA DEVELOPMENT, INC.
2040 LOMITA BLVD., SUITE 100
LOMITA, CA 90717
310.373.8555
luigi@schippadev.com

SCALE: 1/8" = 1'-0"



A2.0
DATE: May 12, 2021



EAST ELEVATION

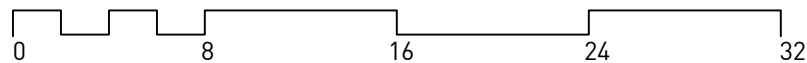
981 VIA RINCON, PALOS VERDES ESTATES, CA 90274

dLR Design Inc.
2040 Lomita Blvd., Suite 104,
Lomita, CA, 90717
1.310.972.9050

981 VIA RINCON

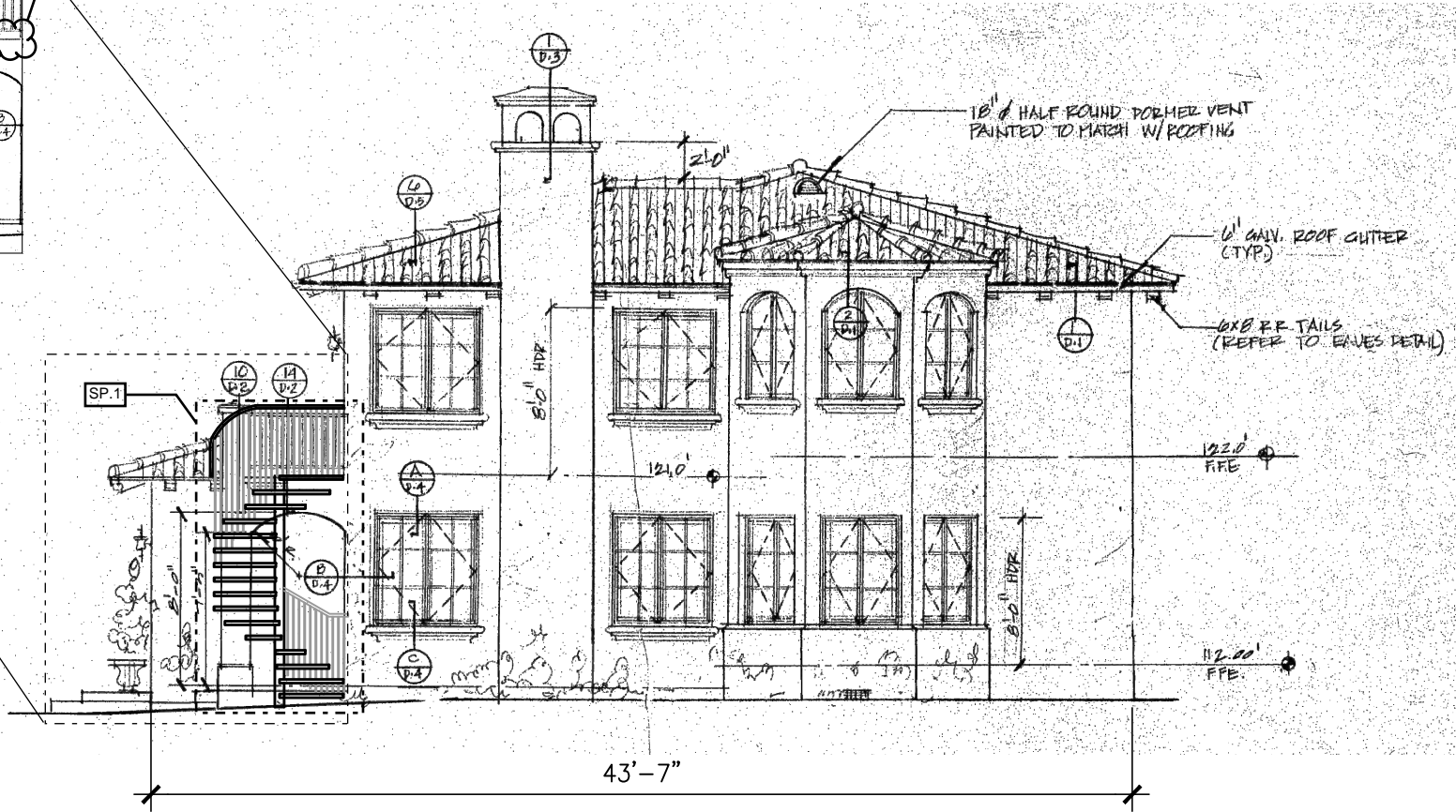
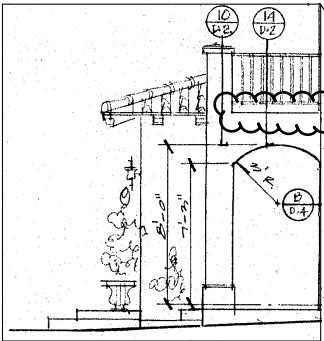
APPLICANT / DEVELOPER
LUIGI SCHIAPPA DEVELOPMENT, INC.
2040 LOMITA BLVD., SUITE 100
LOMITA, CA 90717
310.373.8555
luigi@schiappadev.com

SCALE: 1/8" = 1'-0"



A3.0
DATE: May 12, 2021

REMOVE PRECAST
CAP FOR STAIRCASE
INSTALL



NORTH ELEVATION

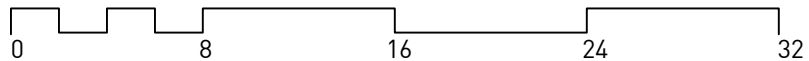
981 VIA RINCON, PALOS VERDES ESTATES, CA 90274

dLR Design Inc.
2040 Lomita Blvd., Suite 104,
Lomita, CA, 90717
1.310.972.9050

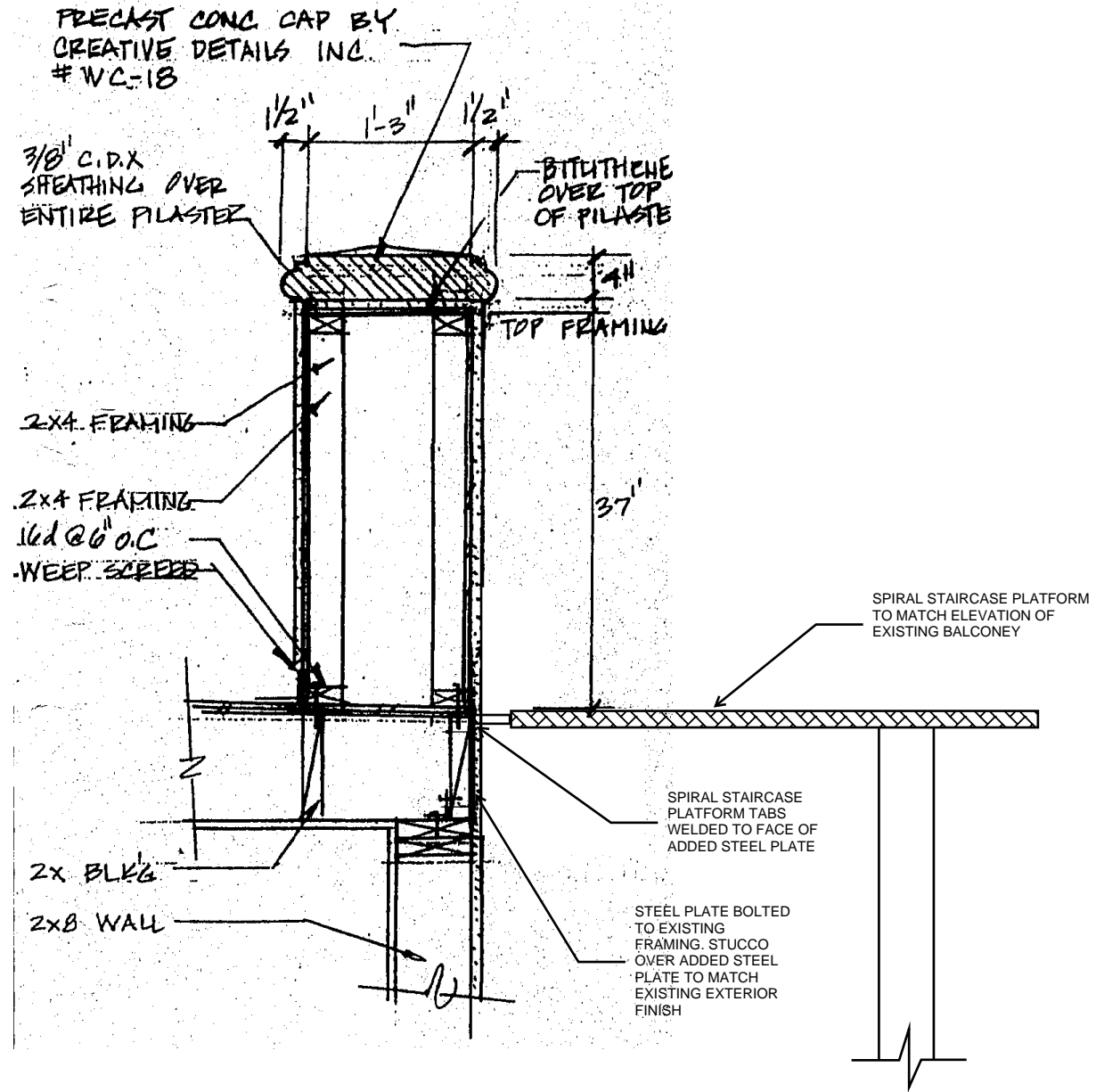
981 VIA RINCON

APPLICANT / DEVELOPER
LUIGI SCHIAPPA DEVELOPMENT, INC.
2040 LOMITA BLVD., SUITE 100
LOMITA, CA 90717
310.373.8555
luigi@schiappadev.com

SCALE: 1/8" = 1'-0"



A3.1
DATE: May 12, 2021

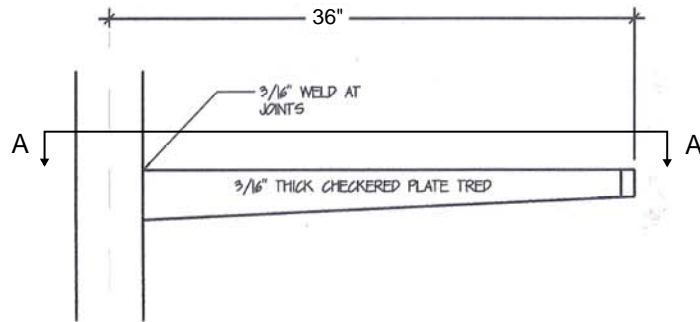


981 VIA RINCON

DETAIL 14

APPLICANT / DEVELOPER
 LUIGI SCHIAPPA DEVELOPMENT, INC.
 2040 LOMITA BLVD., SUITE 100
 LOMITA, CA 90717
 310.373.8555
 luigi@schippadev.com

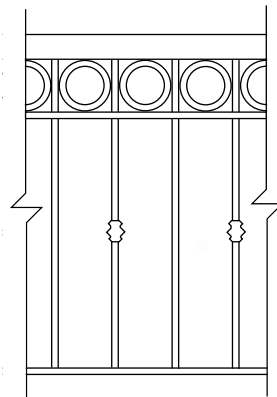
D.2



SECTION A-A

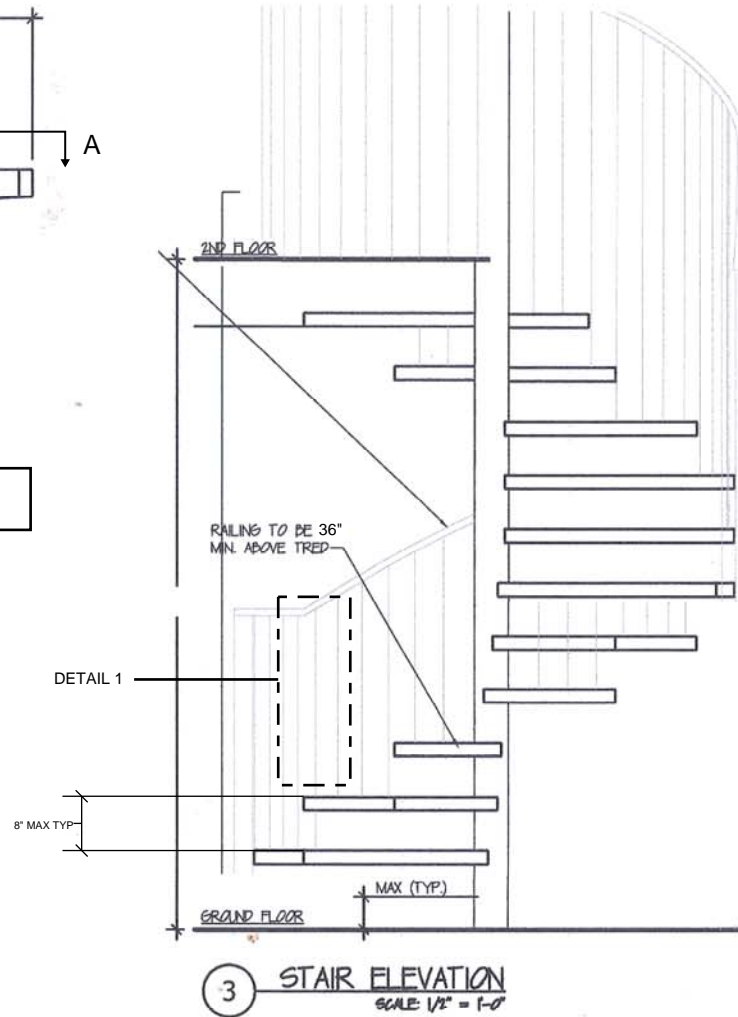


NOTE: SPIRAL STAIR RAILING TO MATCH EXISTING BALCONY RAILING (SEE ABOVE)



NOTE: WROUGHT IRON WITH DECORATIVE KNUCKLES. MATCH EXISTING RAILING FINISH. (SEE PHOTO TO THE LEFT) RAILING HEIGHT TO BE 36" MIN ABOVE TREADS. HEIGHT TO MATCH EXISTING RAIL.

DETAIL 1



Spiral Staircase
Harbor Ornamental



SITE PHOTOS