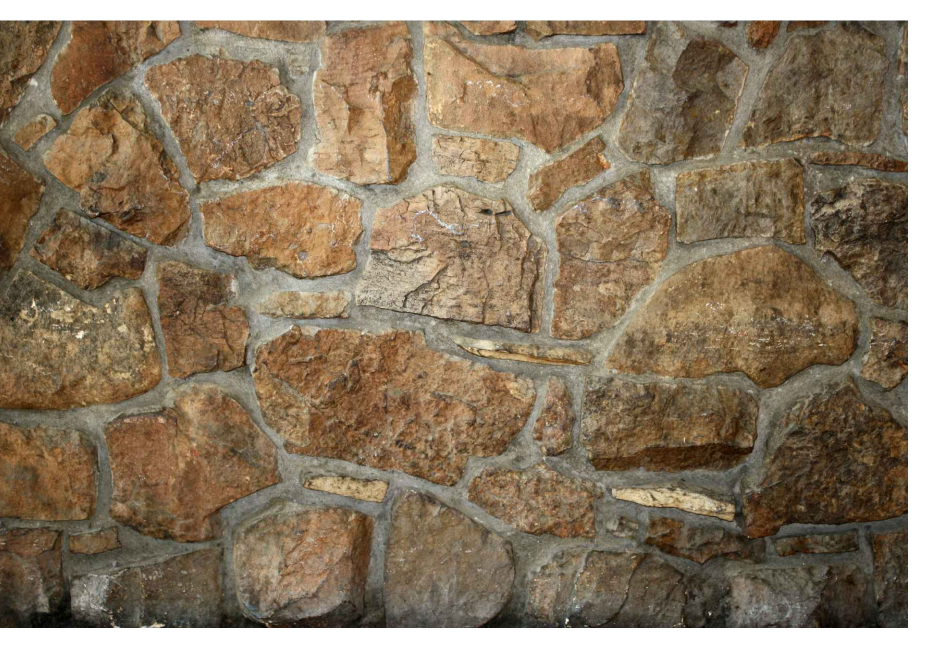


**MATERIALS LEGEND**

SYMBOL	MATERIAL	SPECIFICATIONS	PHOTO
	ROCK WALL	LIMESTONE ELDERADO ASHLAR SANTA BARBARA	# 1
	DRIVEWAY	SAND FINISH CONCRETE COLOR MESA BUFF TOPCAST #5	# 2
	WALKWAY	SAND FINISH CONCRETE COLOR MESA BUFF TOPCAST #3	# 2
	DINING PATIO	SAND FINISH CONCRETE COLOR MESA BUFF TOPCAST #3	# 2
	FAMILY ROOM PATIO & FRONT COURTYARD	STONE TILE COLOR CAFE - ALAMO STONE	# 7
	CONCRETE PADS	SAND FINISH CONCRETE COLOR MESA BUFF TOPCAST #5	# 2
	SIDE YARD	GRAVEL CALIFORNIA GOLD 3/8" PEBBLES	# 4
	WATER FEATURE A	LIMESTONE STONE FOUNTAIN AND WROUGHT IRON	# 5
	FLAGSTONE PATH	STONE SANTA BARBARA FLAGSTONE	# 3
	Poured In Place Coping	SMOOTH FINISH CONCRETE COLOR SAN DIEGO	



1 ROCK WALL SANTA BARBARA STONE SAMPLE TO BE PROVIDED BY OWNER



2 SAND FINISH CONCRETE COLOR MESA BUFF



3 Driveway "Courtyard Stone Combo Sand/Stone/Mocha"



4 SIDE YARD GRAVEL



5 PREFAB LIMESTONE FOUNTAIN



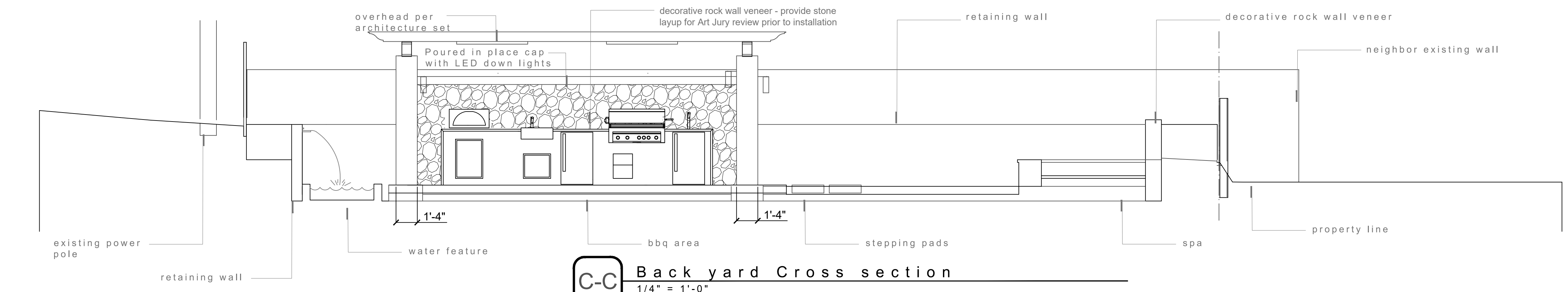
6 DECORATIVE BOULDER



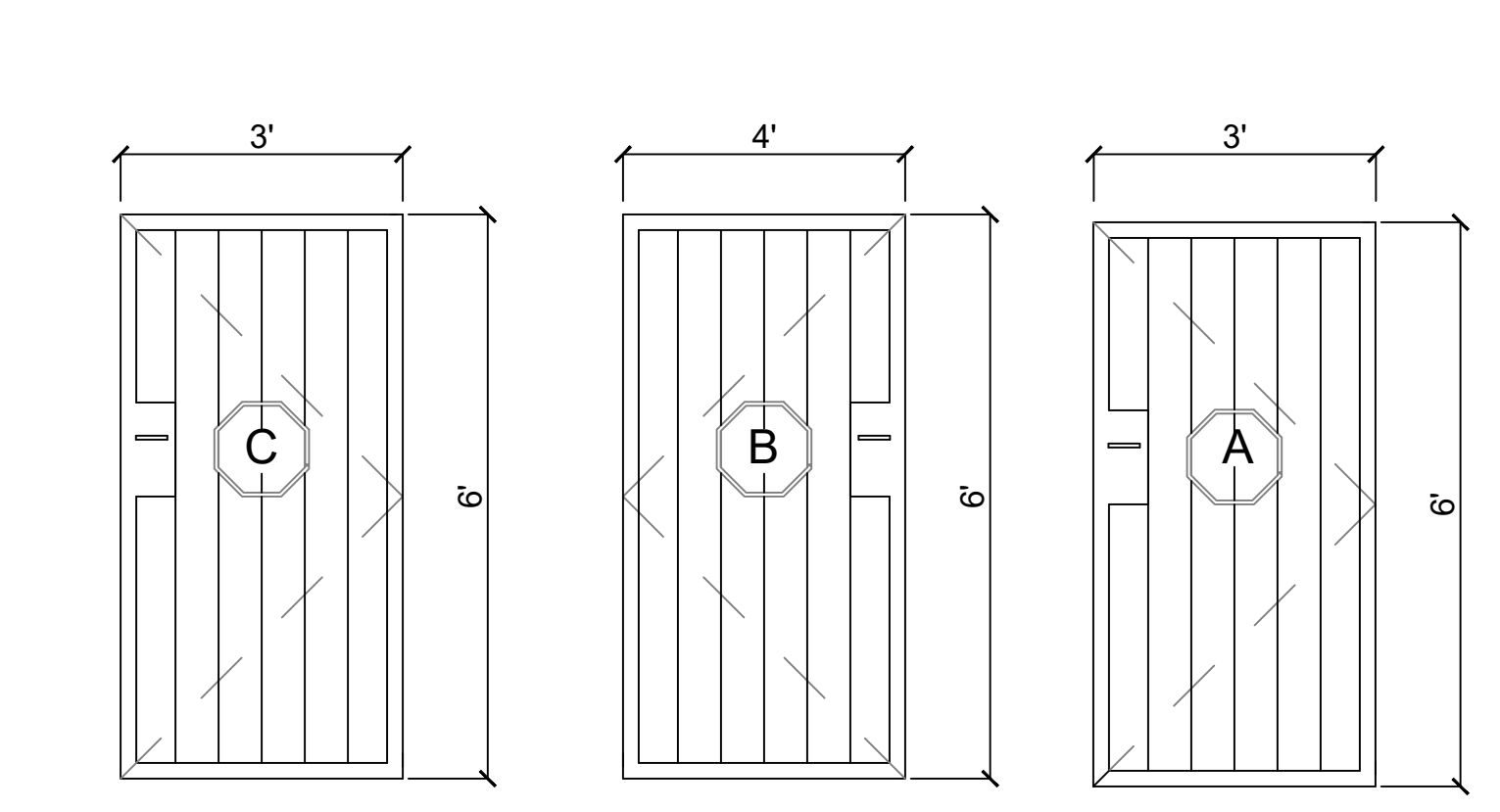
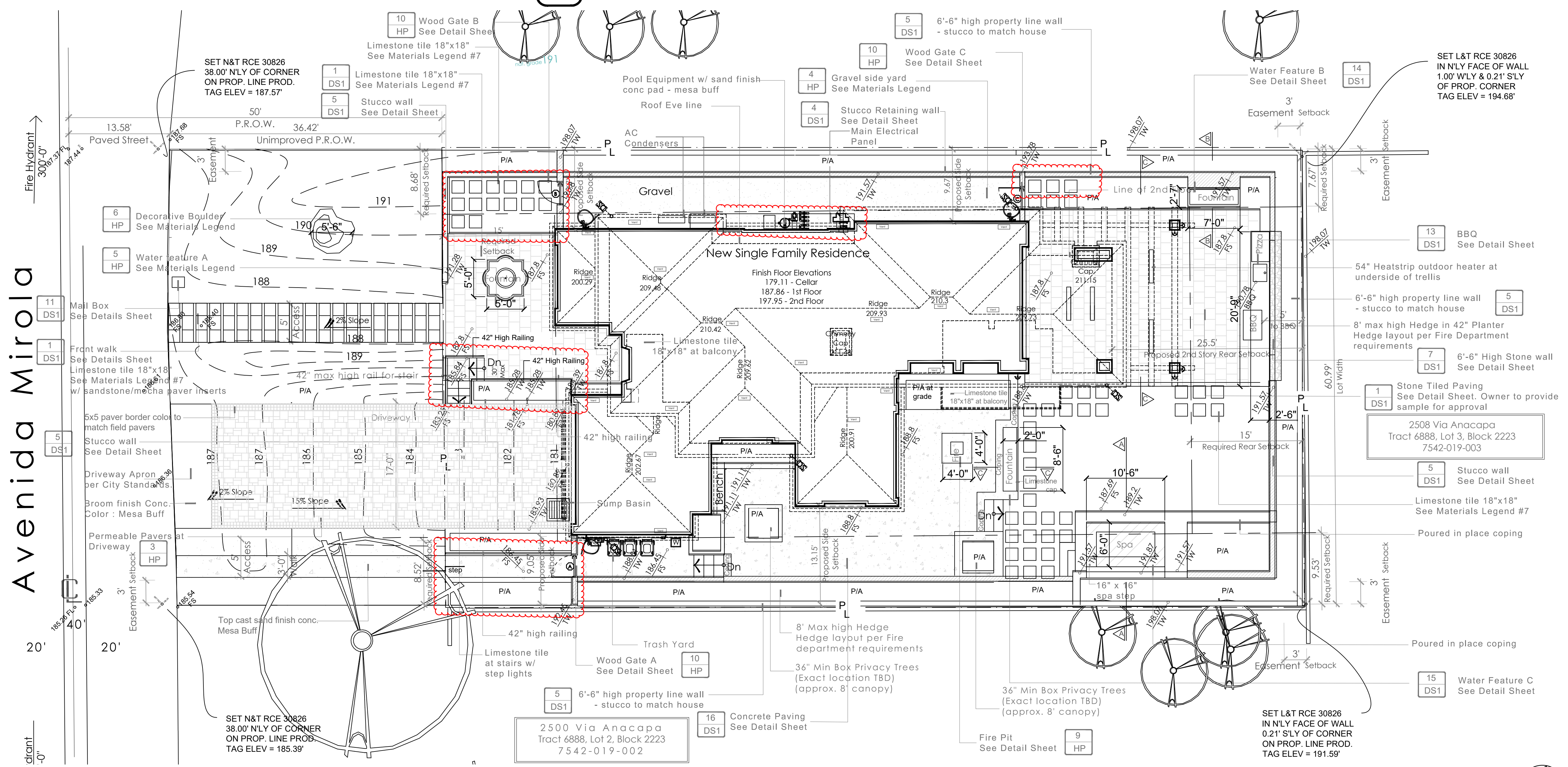
7 STONE TILED PATIO



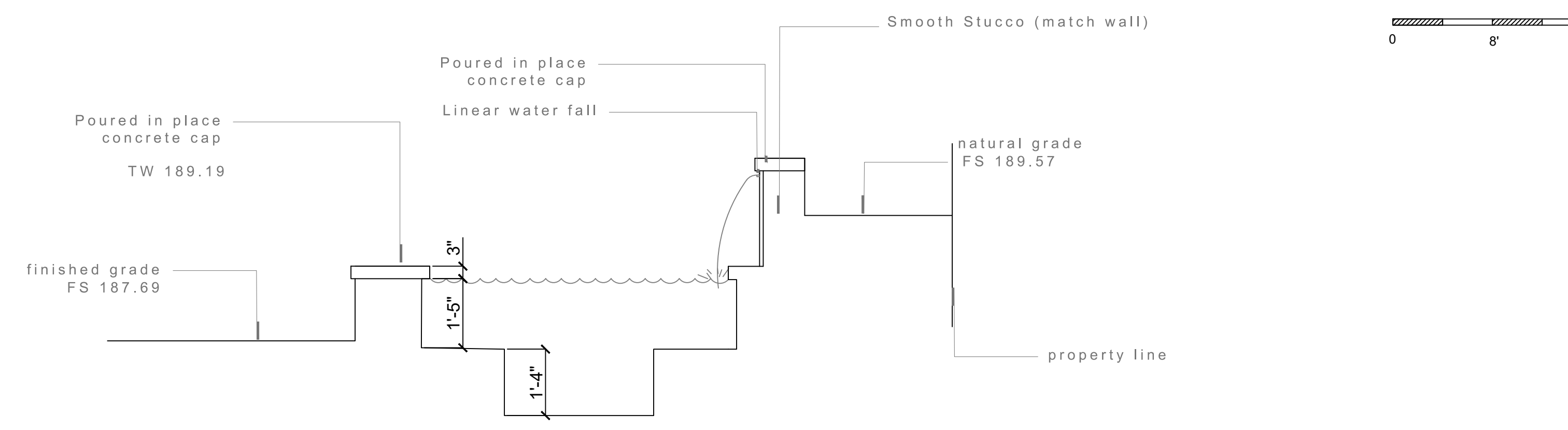
7 Wrought Iron Railing



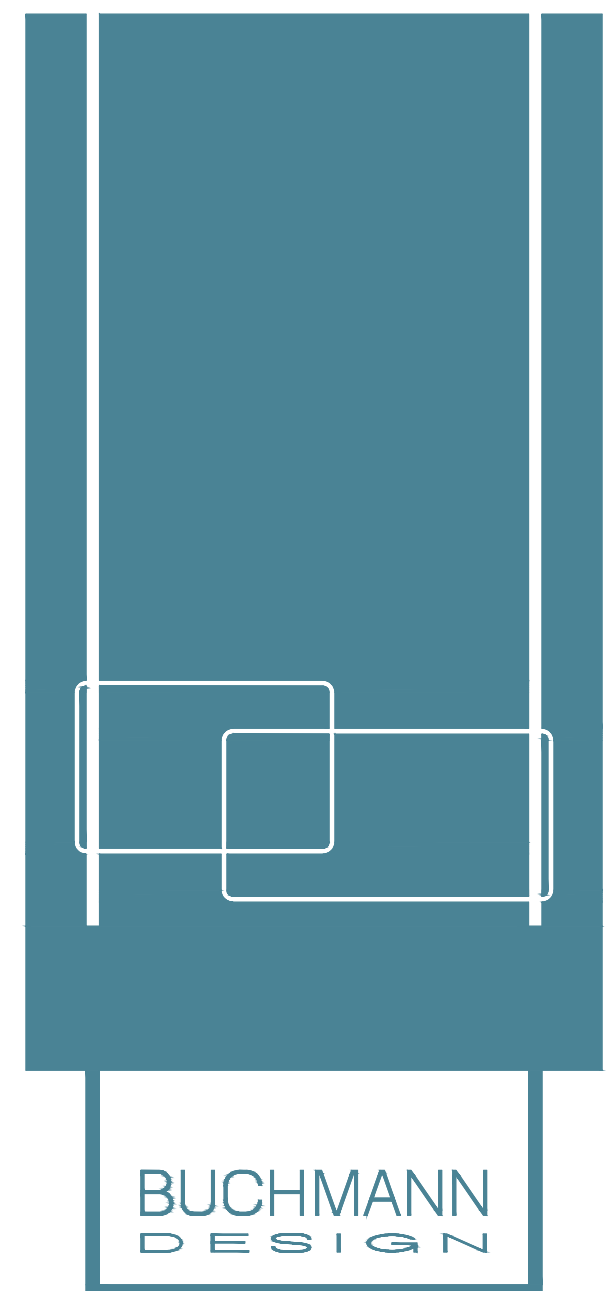
C-C Back yard Cross section  
1/4" = 1'-0"



1 Gate Schedule  
1/2" = 1'-0"

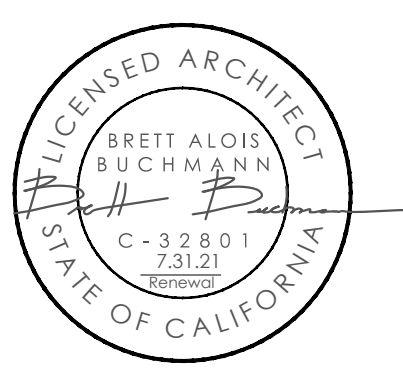


A-A Spa Cross section  
1/2" = 1'-0"



746 4th st. hermosa beach office # 310-896-8331  
office@buchmann-design.com

BLAIS RESIDENCE  
608 Avenida Mirola, Palos Verdes Estates, CA 90274



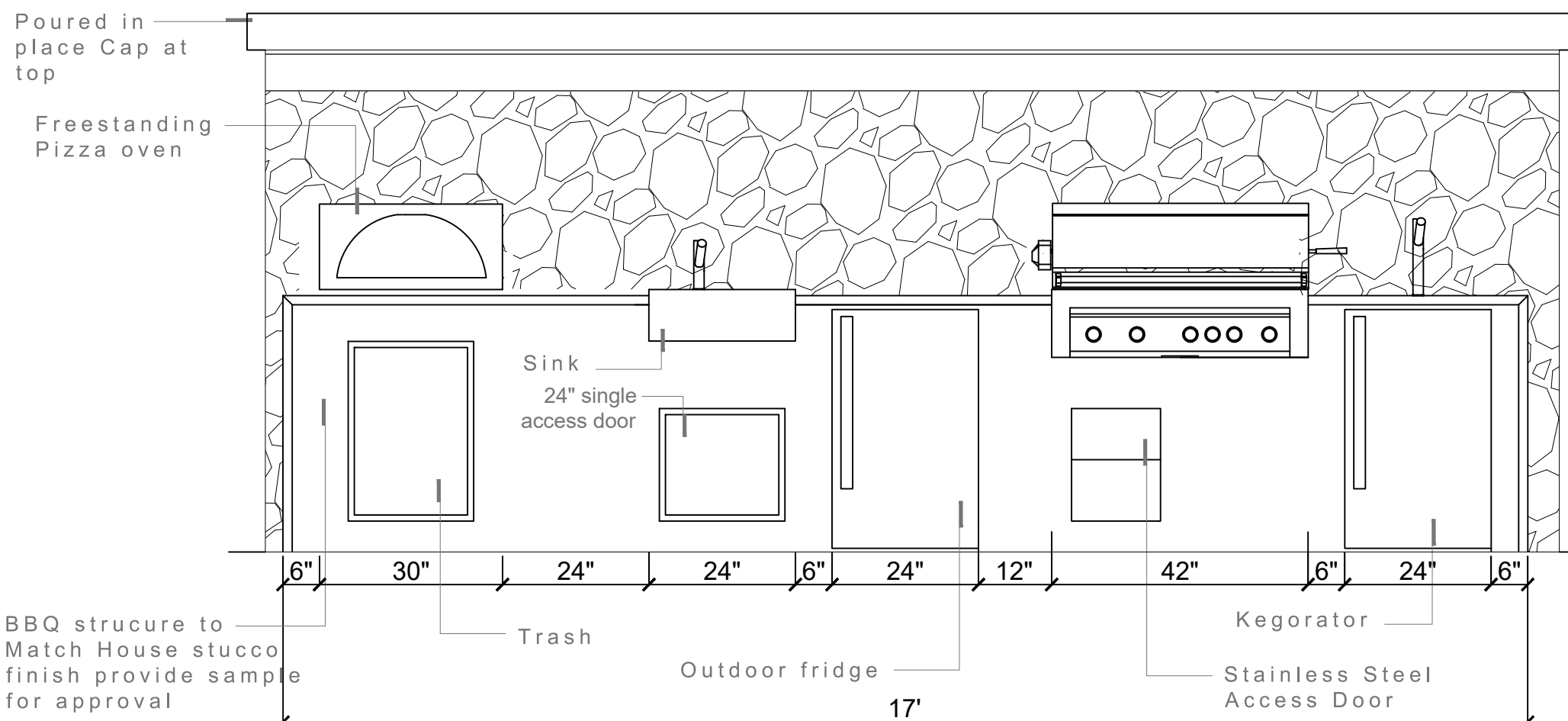
HARDSCAPE PLAN

HP

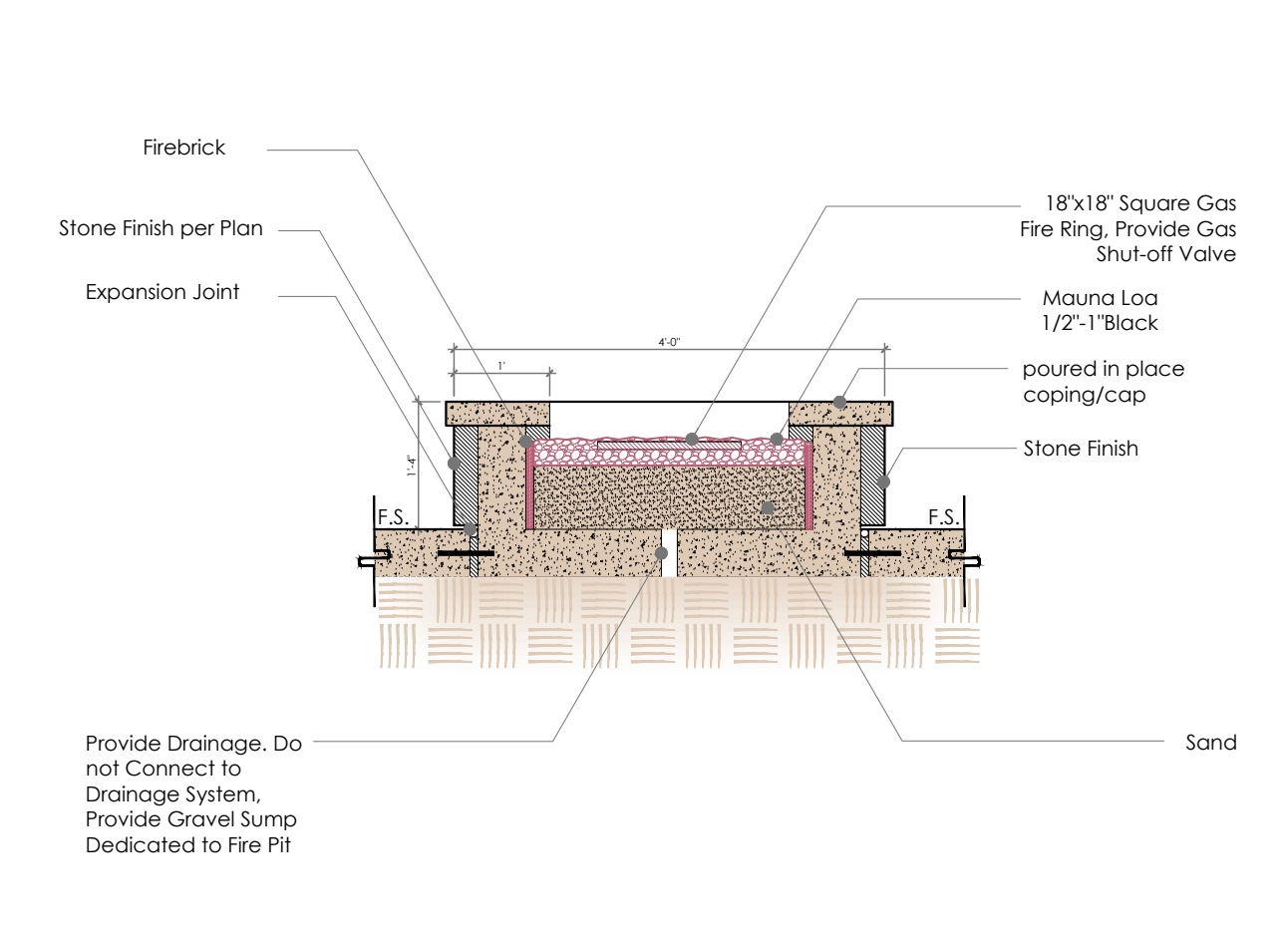
1705  
June 2, 2020

\* NOTE: Owner to provide samples of all materials for approval to Art Jury.

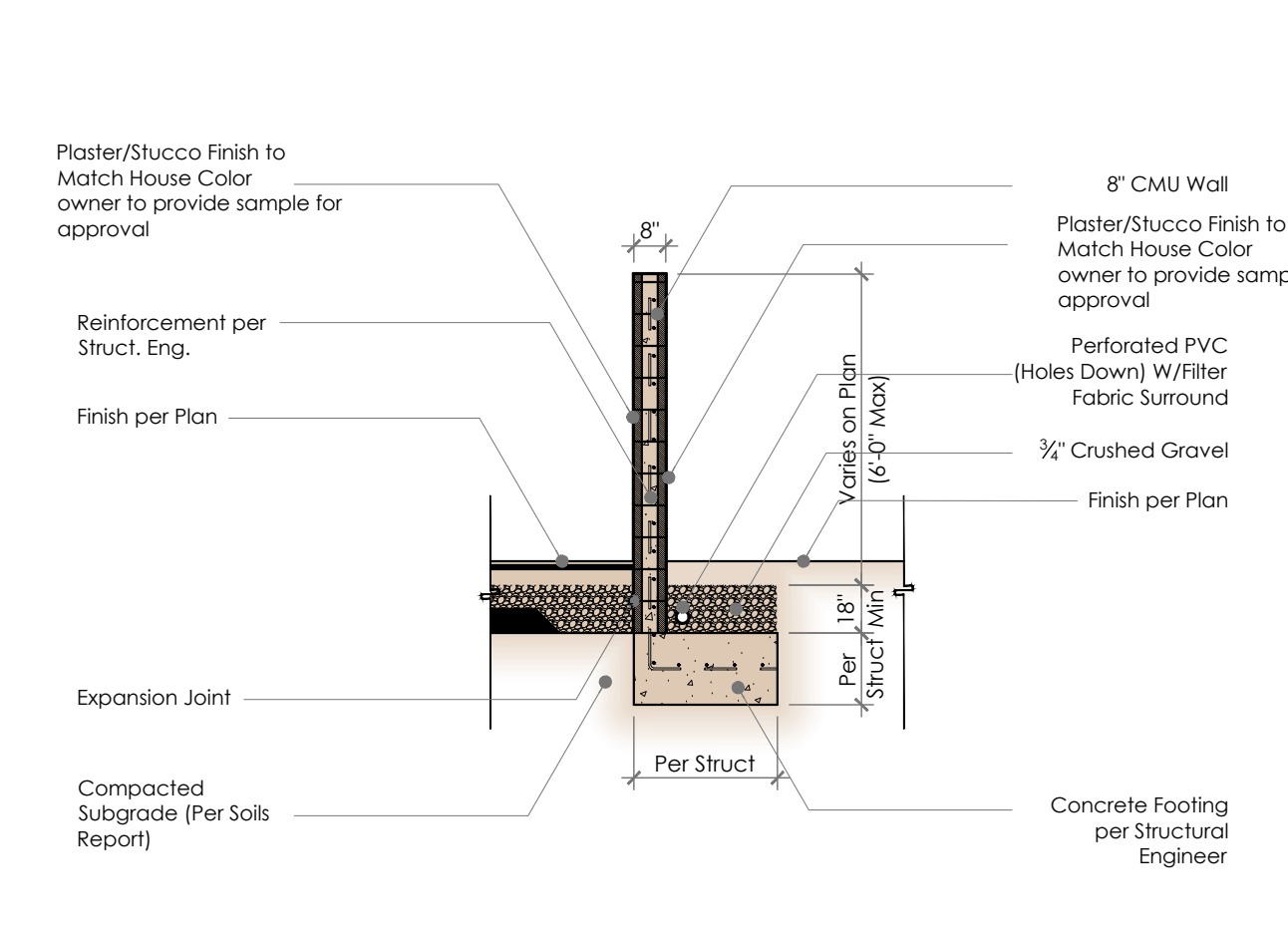




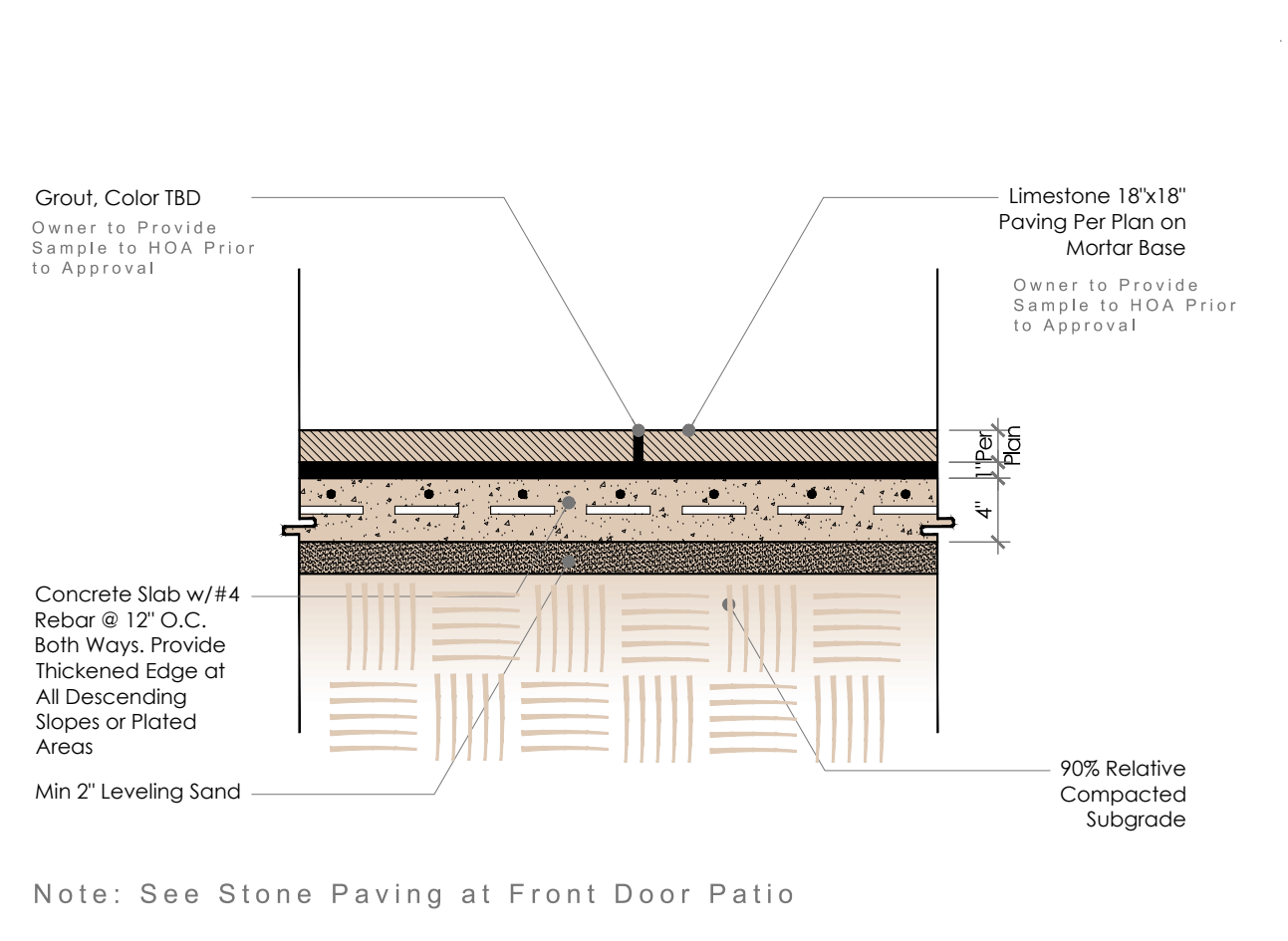
**13** BBQ elevation  
1/2" = 1'-0"



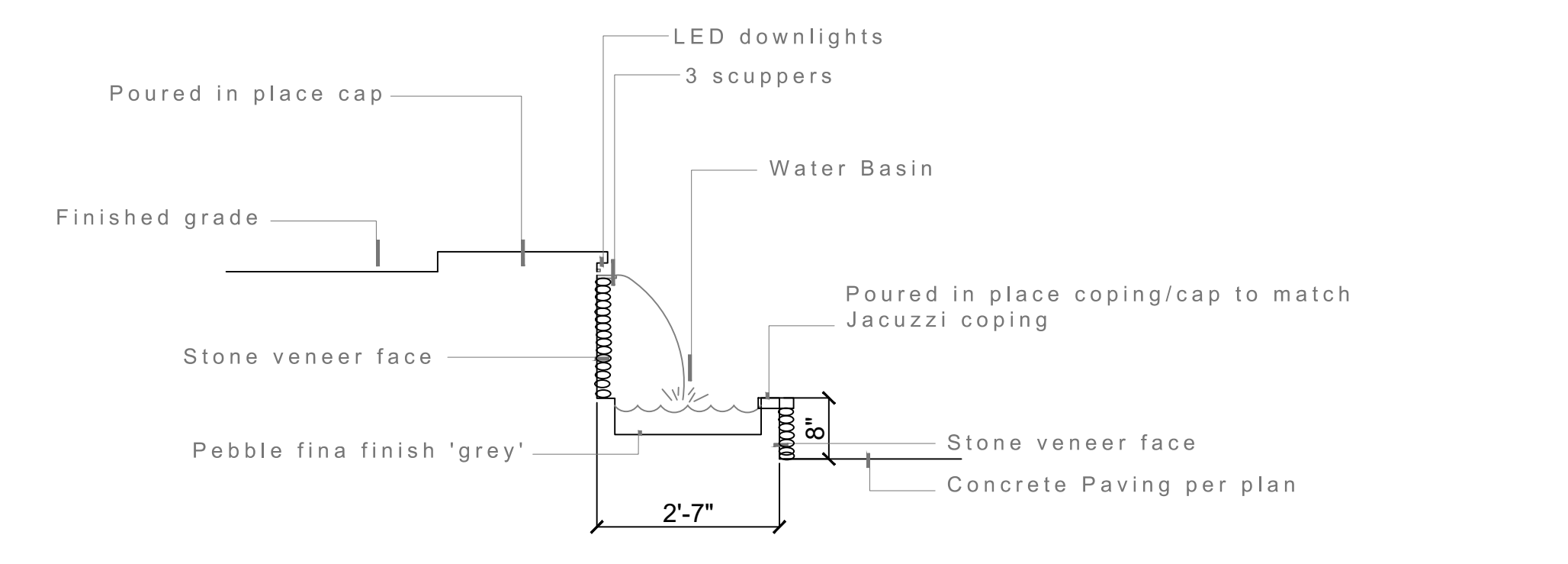
**9** Fire Pit  
1/2" : 1'-0"



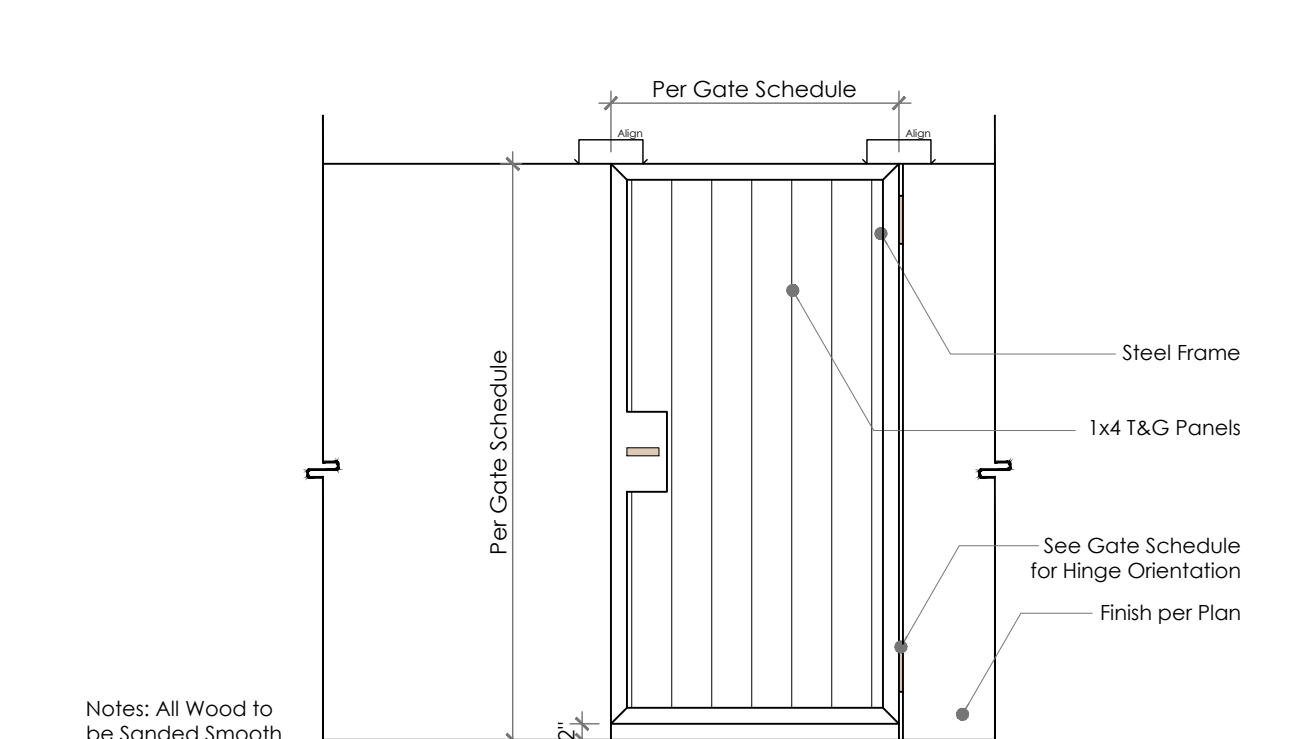
**5** Free Standing Wall - Plaster/Stucco  
1/4" : 1'-0"



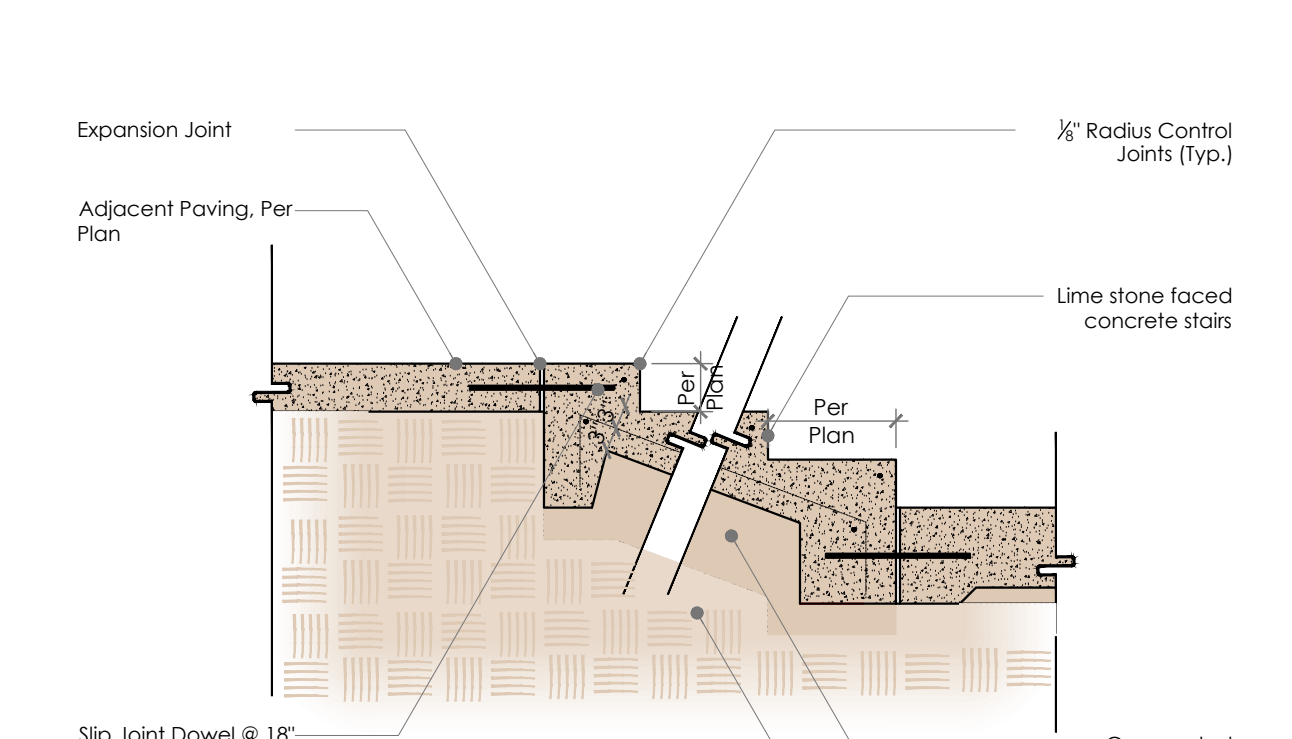
**1** Stone Paving  
1" : 1'-0"



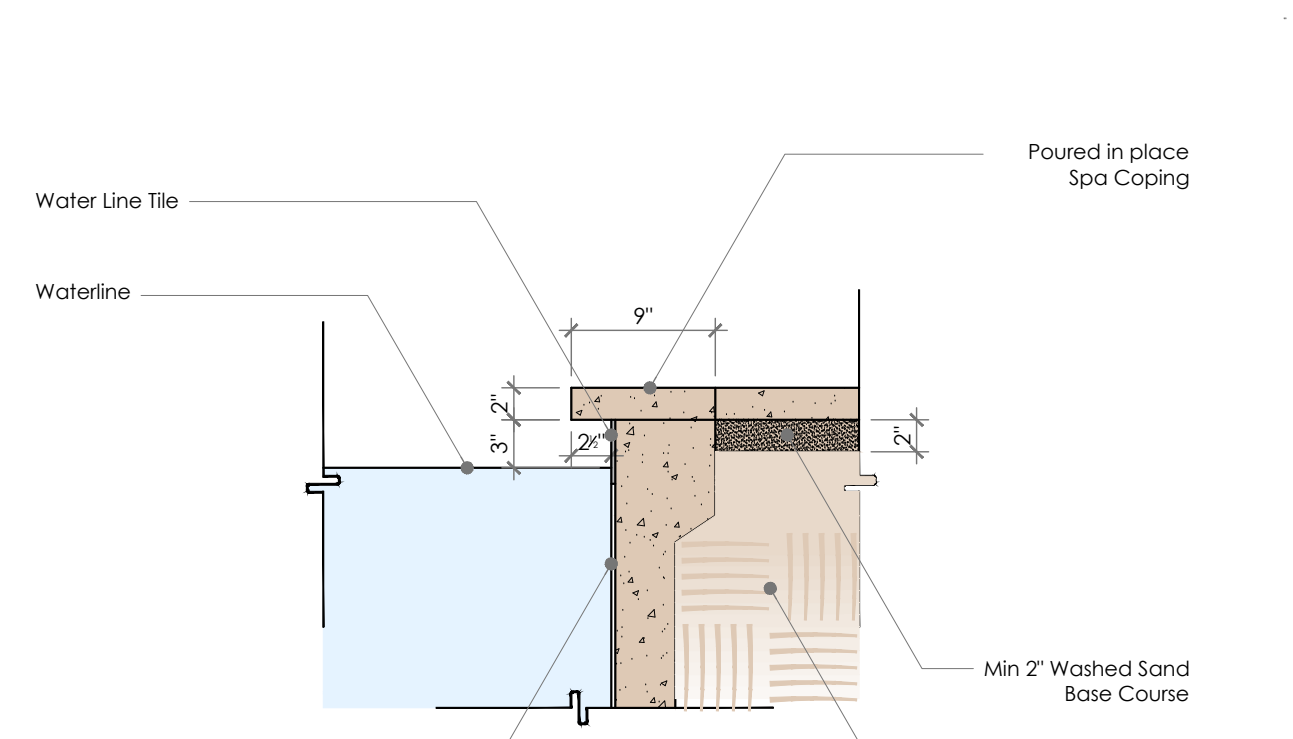
**14** Water feature B cross section  
1/2" = 1'-0"



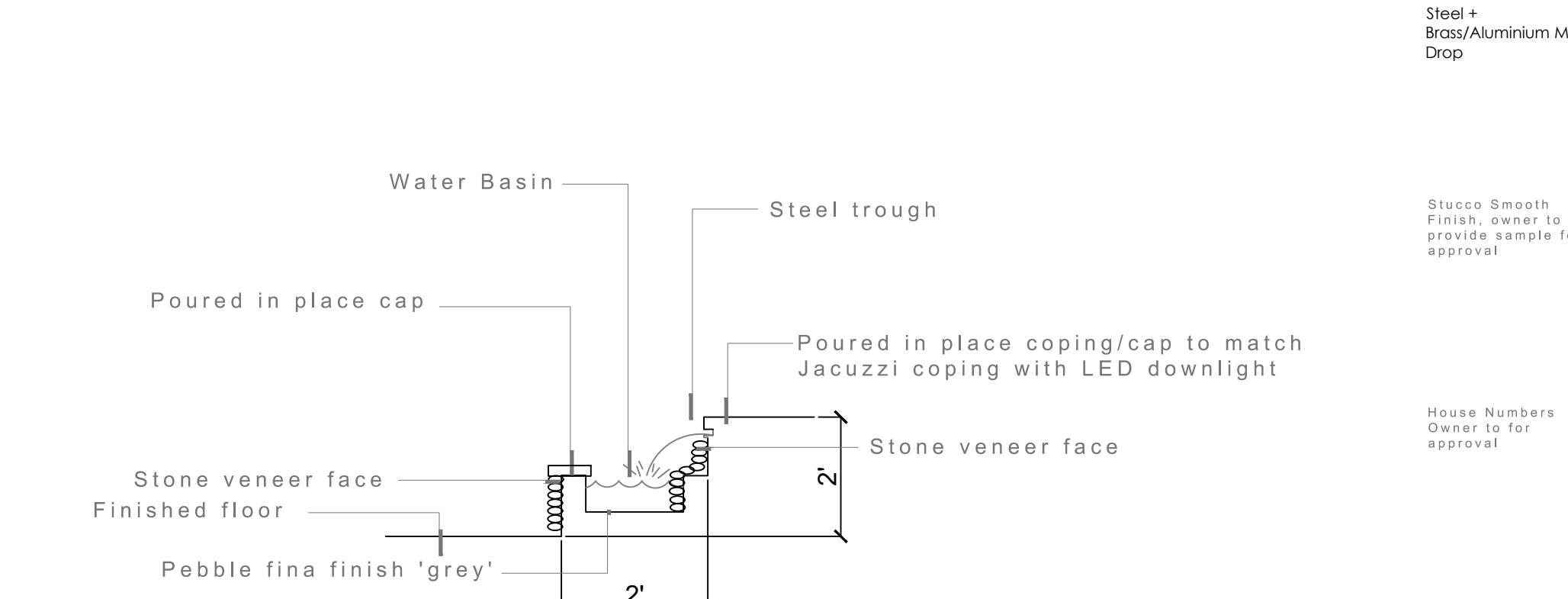
**10** Steel Framed Gates  
1/2" : 1'-0"



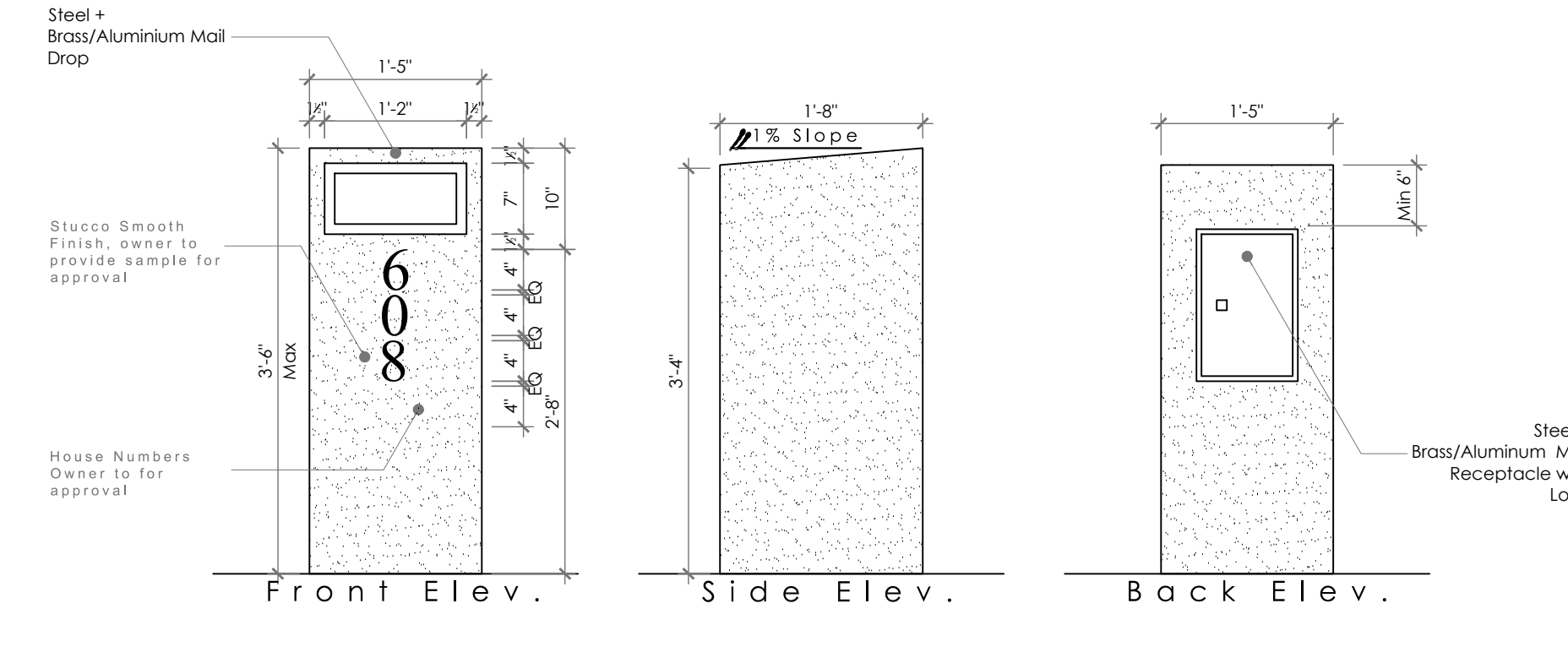
**6** Concrete Steps  
1/2" : 1'-0"



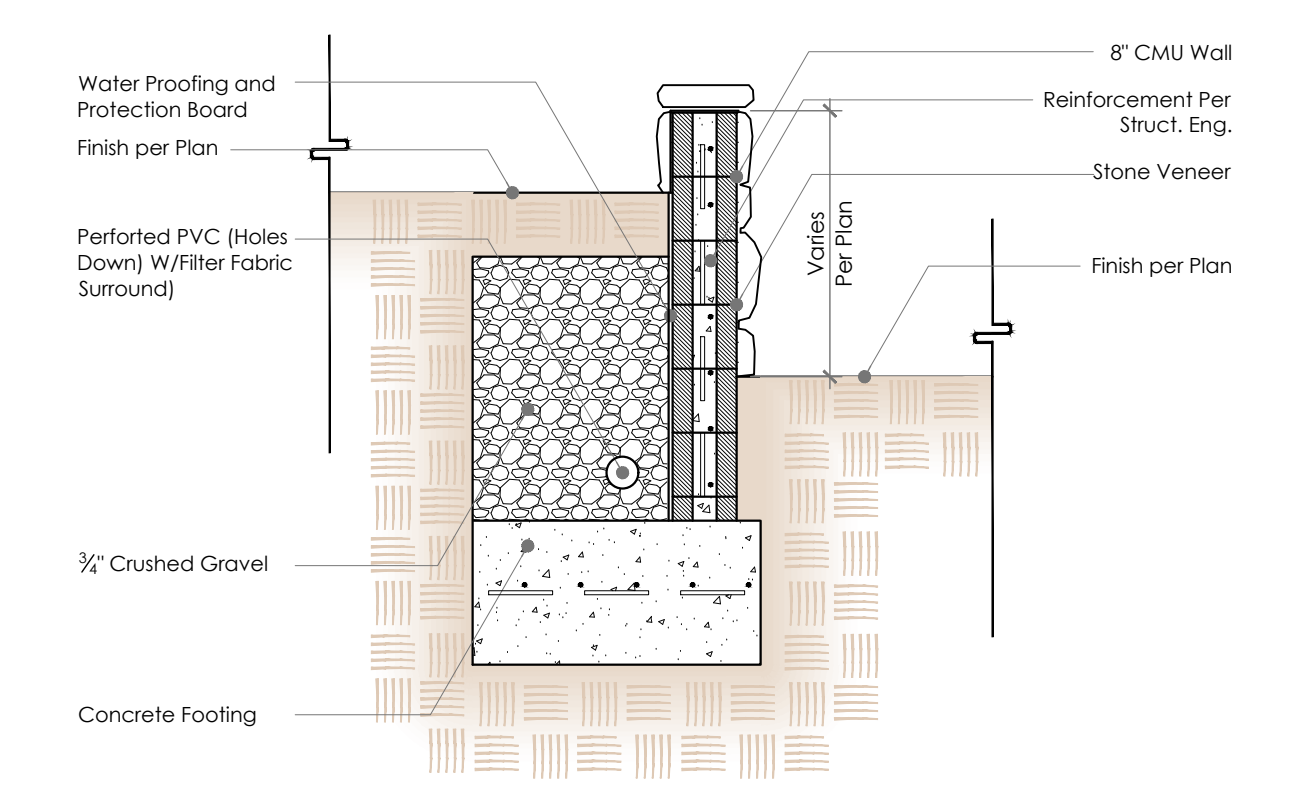
**2** Stone Spa Coping  
1" : 1'-0"



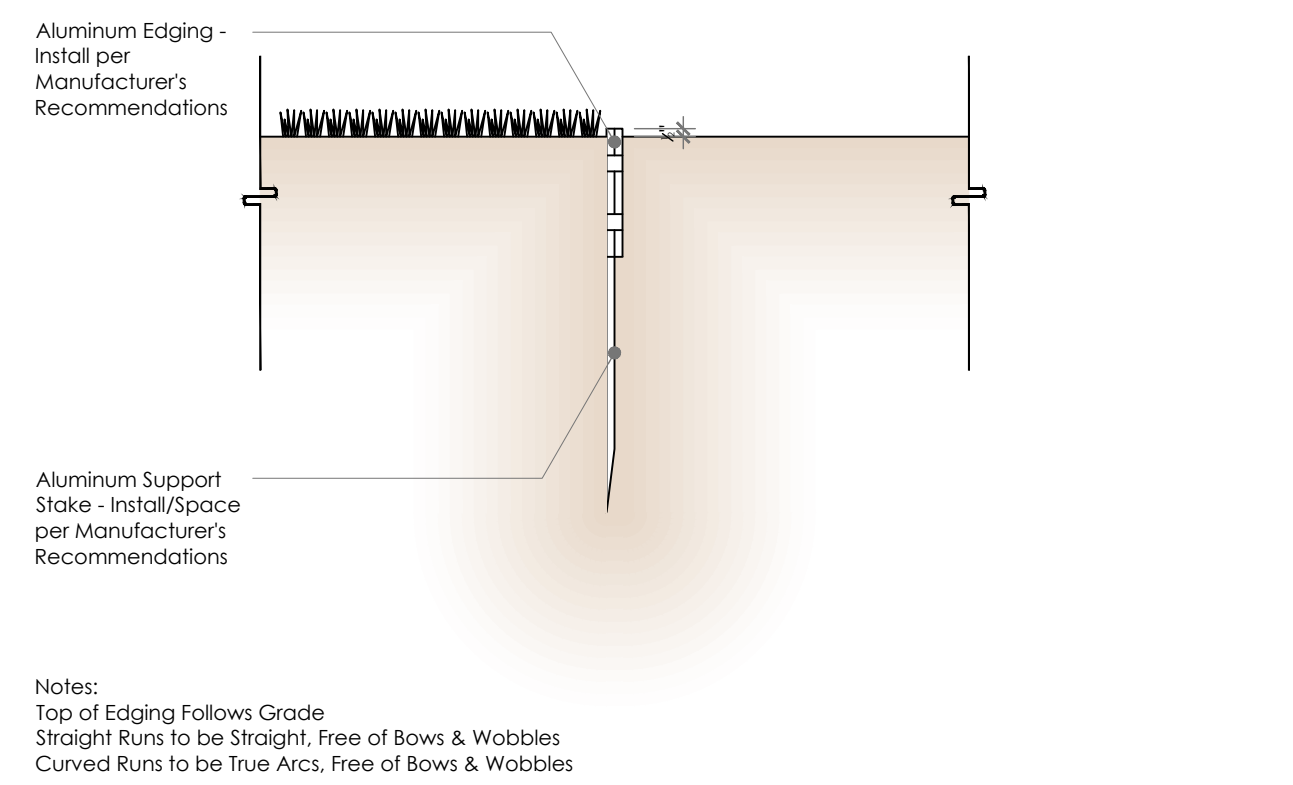
**15** Water feature C cross section  
1/2" = 1'-0"



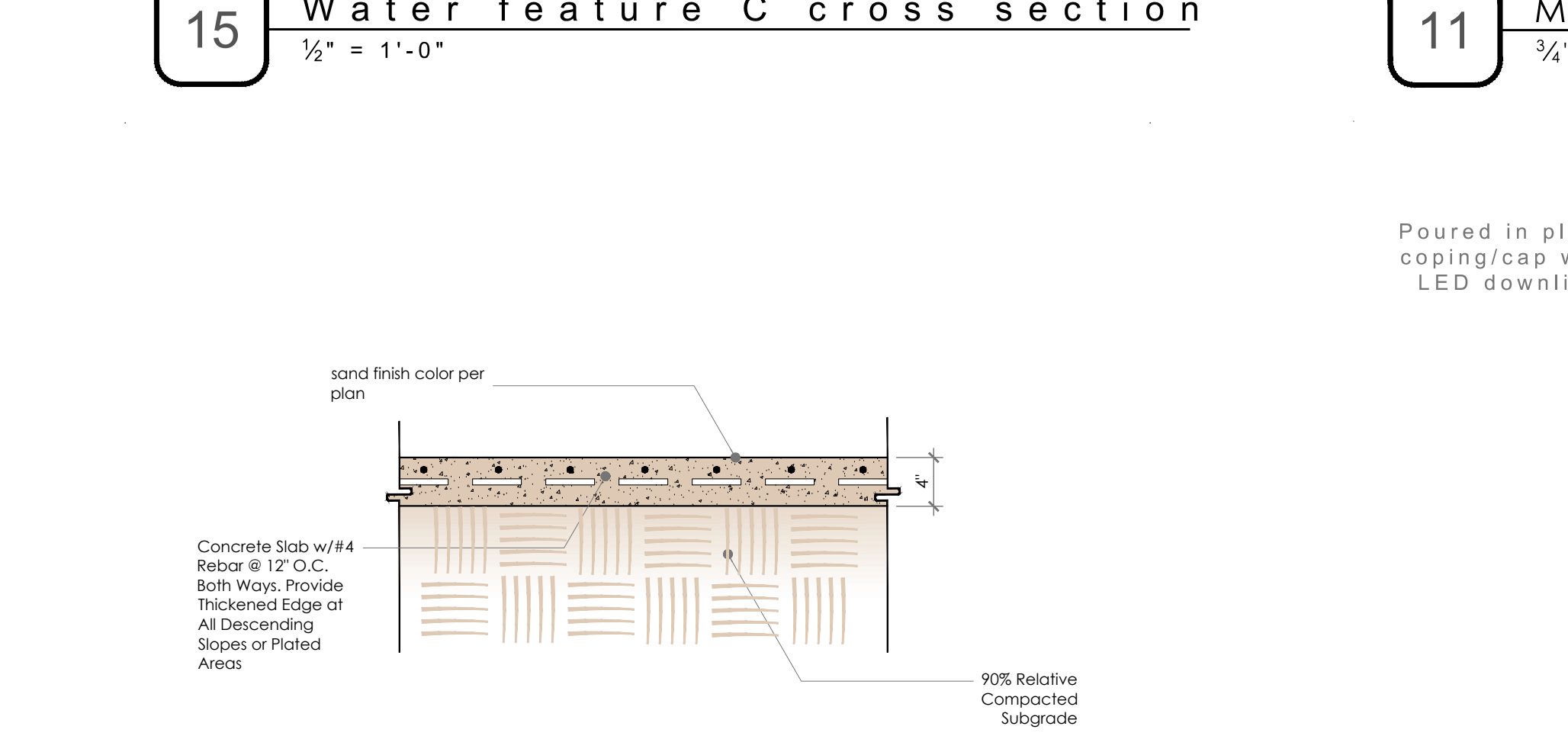
**11** Mailbox Pilaster  
3/4" : 1'-0"



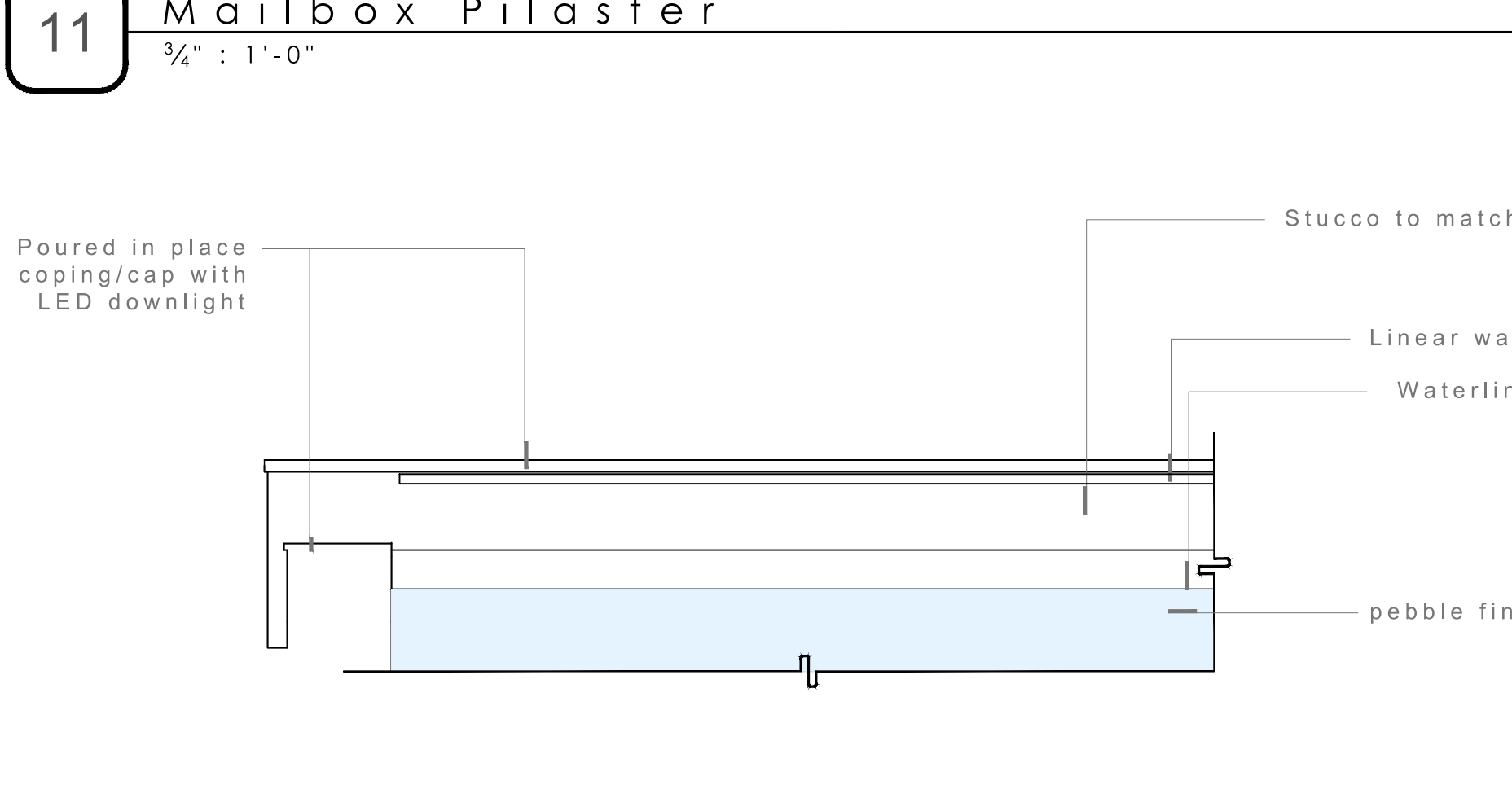
**7** Retaining Wall - Stone  
1/2" : 1'-0"



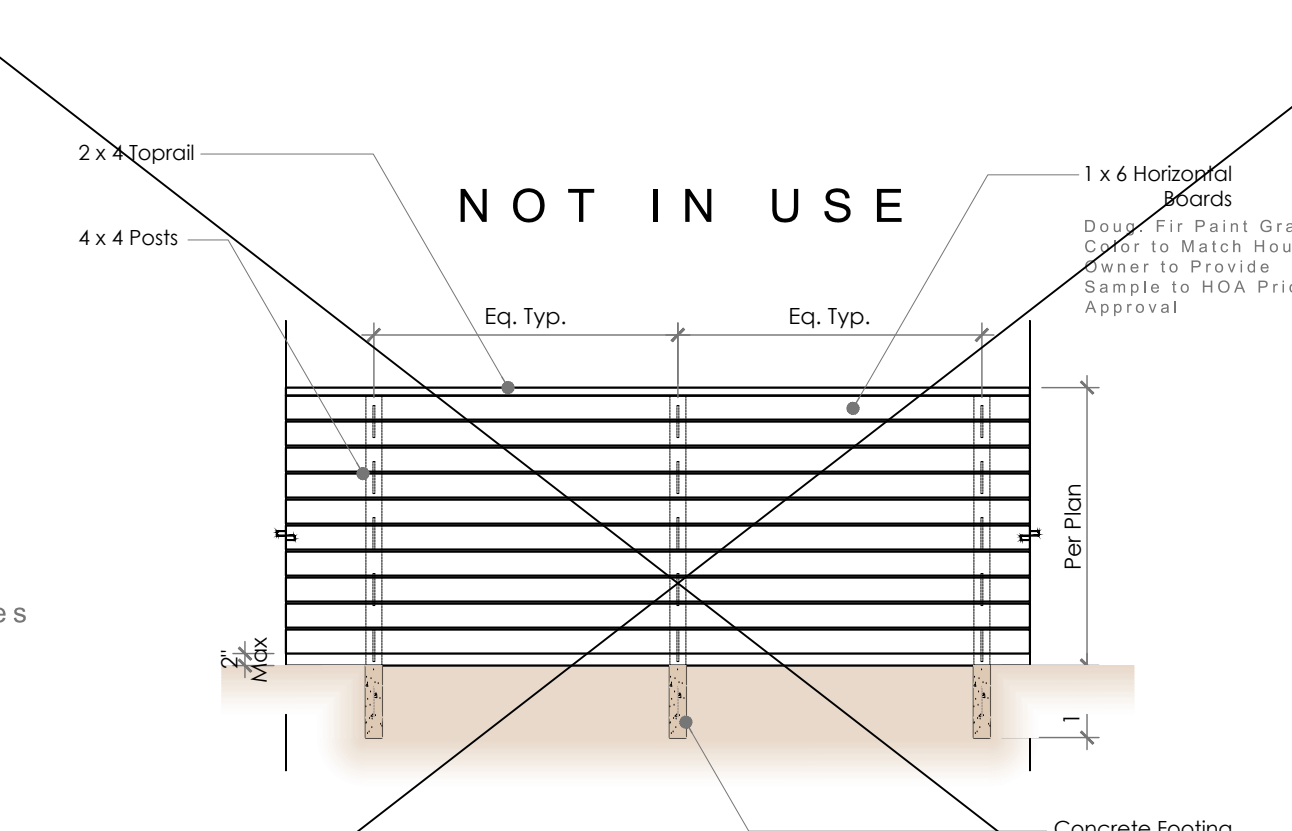
**3** Landscape Header  
1" : 1'-0"



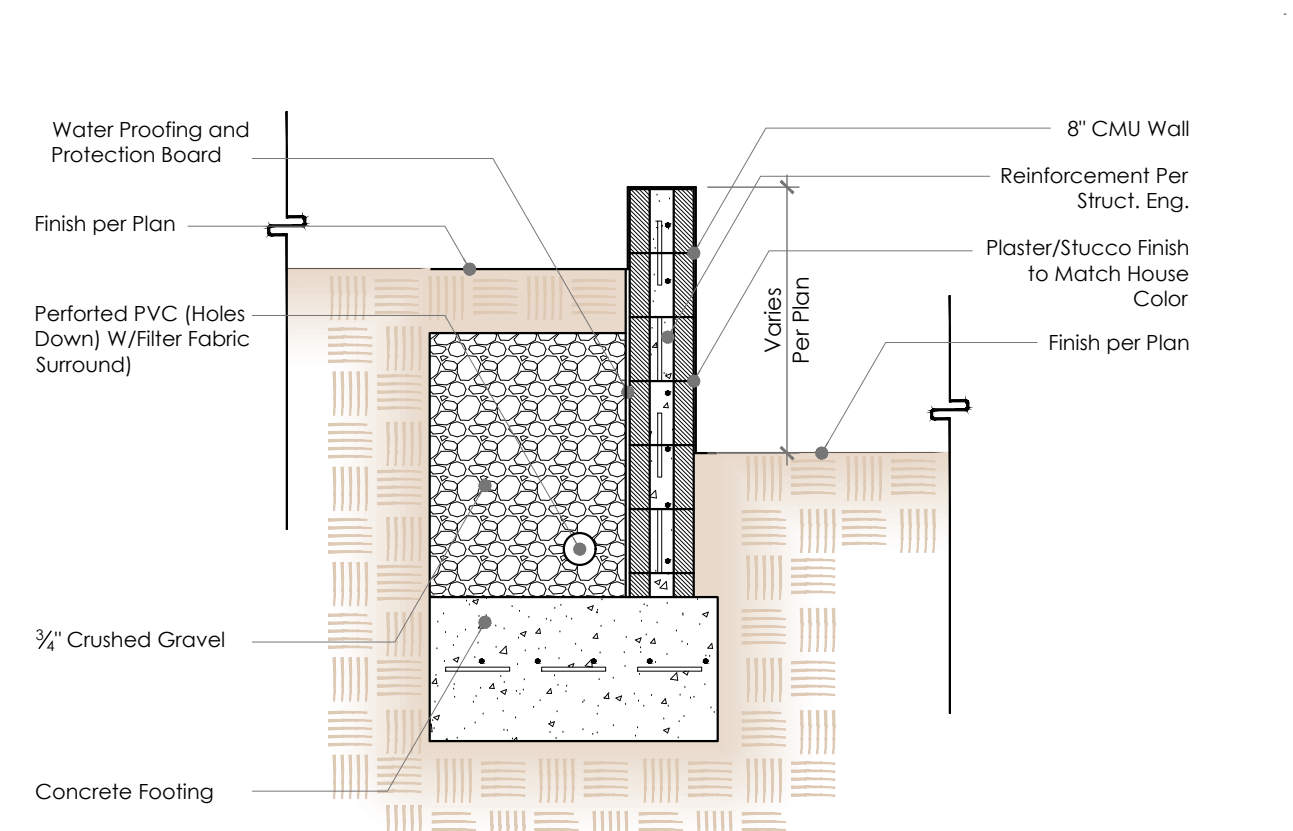
**16** Concrete Paving  
1" : 1'-0"



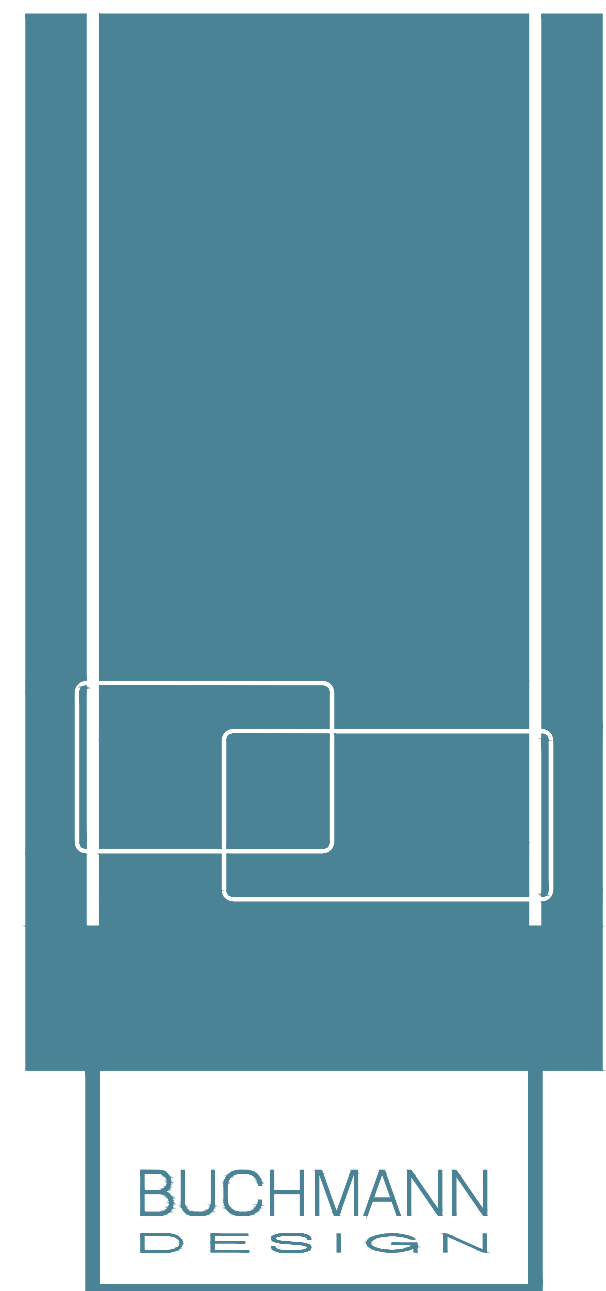
**12** Spa Feature Wall with Stone Cap  
NTS



**8** Wood Fence  
1/4" : 1'-0"



**4** Retaining Wall - Plaster/Stucco  
1/2" : 1'-0"



746 4th st. hermosa beach office # 310-896-8331 office@ buchmann-design.com

BLAIS RESIDENCE  
608 Avenida Mirola, Palos Verdes Estates, CA 90274



DETAILS SHEET

DS1

1705  
June 2, 2020