

Newsletter

Winter 2018



PALOS VERDES ESTATES CITY COUNCIL

Mayor

Betty Lin Peterson

Mayor Pro Tem

Kenneth J. Kao

Councilmember

Sanford S. Davidson, M.D.

Councilmember

Jennifer L. King

Councilmember

James D. Vandever

Website:

www.pvestates.org

Email City Hall at:

cityclerk@pvestates.org

GET TO KNOW: PVE POLICE CAPTAIN TONY BEST

It is through dedication, hard work and community involvement that the City of Palos Verdes Estates maintains its character and quality of life as one of the best communities in California.

To help you get to know the members of the City team, we are pleased to introduce a staff person in each newsletter. For this newsletter, we would like you to meet Captain Tony Best. Tony is a veteran of the United States Marine Corps and has been with PVE Police Department for 23 years.

How did you get into law enforcement?

I enjoyed the comradery, teamwork and pride in service the Marine Corps offered, and law enforcement seemed like a natural extension of that. Several of my friends went into law enforcement after they left the Marine Corps and enjoyed it. Therefore, when I got out, I looked into different police agencies. One agency caught my attention, the Palos Verdes Estates Police Department because its size and unique ability for officers to become part of the community. Although there were no openings for entry level police officers, I applied as a Service Officer and was hired. The following year, a police officer position opened up and I tested. I was ultimately selected and attended the Orange County Sheriff's Academy.

What is your favorite thing about your job?

The thing I like the most about being an officer is the opportunity to help people during the most difficult times

of their lives. I have helped victims of domestic violence, sexual assault and other serious crimes. Whether that came in the form of providing advice, a sense of security and protection or closure by apprehending a suspect,



I was able to make a positive impact on someone's life when they needed help the most. Helping someone, often a complete stranger, when they feel helpless, is very rewarding.

What do movies get wrong (or right) about being a police officer?

While Hollywood is entertaining, they often get it wrong. There are several misconceptions in movies including: DNA results can be obtained within 30 minutes or complex crimes can be solved within an hour. The reality is that DNA results may take as long as a year to get back. Also, solving crimes

continues, see next page

can take a long time. For example, our detectives worked a case for over eight months before arresting five home invasion robbers.

The biggest thing the movies are getting right is they are providing a realistic glimpse into police officers' lives. Police officers are not robots; we are human. We are parents, sons, daughters, spouses, coaches and members of the community. This describes our department perfectly. Our employees have a variety of experiences and roles, but they all

are part of the PVE community and they bring unique experiences to work each day.

What has surprised you the most about working for the PVEPD?

Initially, I was surprised how versatile the police department and its members were, each person willing to step in to help to get the job done. I quickly learned that this was the culture of the PVEPD. As a small department, we have to be great multitaskers, focused, and nimble. The people I work with amaze me

with their ability to respond to and overcome challenges we confront. Whether it was the failure of Measure D, a shrinking budget or the need to do more with less, they always get the job done.

I am amazed each day at the level of teamwork that goes into keeping PVE one of the safest cities in California. When faced with a challenge, department members work together, regardless of assignment, to meet it head-on.

CITY SEEKS PUBLIC SUPPORT FOR 9/11 MEMORIAL TRIANGLE FUNDRAISER

The 9/11 Memorial Triangle welcomes drivers entering Palos Verdes Estates along Palos Verdes Drive West.

Installed on September 12, 2001, the memorial was developed to honor the many civilians and public safety individuals who lost their lives on 9/11.

Through the years, the City has replaced frayed flags and maintained landscape, but has always had long term plans to upgrade the memorial.

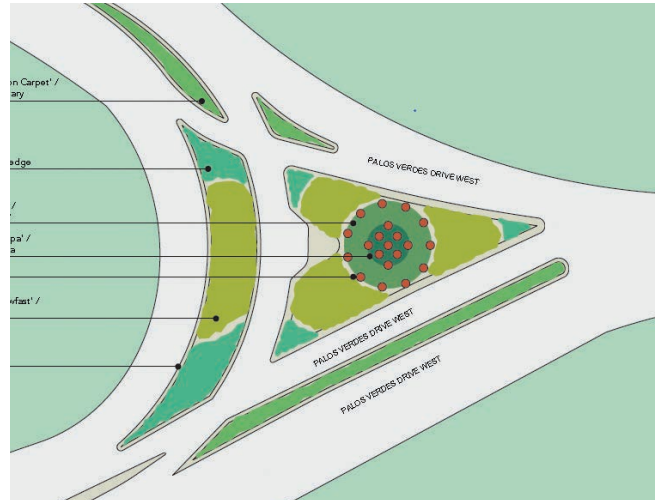
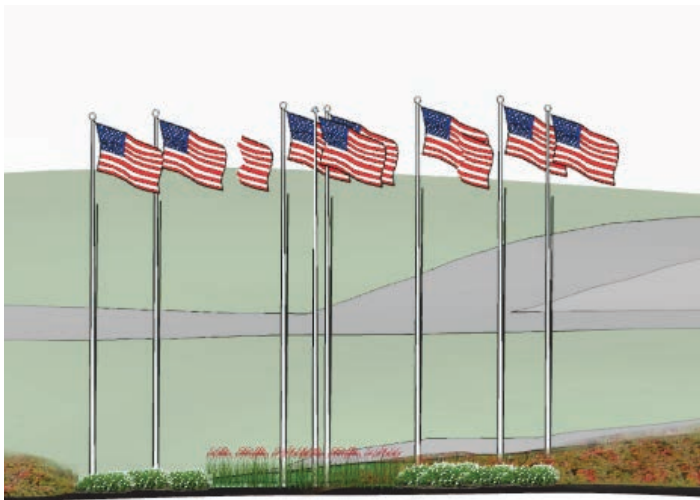
Now, the City has committed \$20,000 to an exciting new circular design by UCLA students that

features 11 flags circling 9 flags with lighting and a variety of colorful, drought tolerant, and native landscaping to create a welcoming gateway entrance to the City for our residents and the public. This includes replacing the PVC flag poles with 20-foot high commercial grade poles and lighting that is respectful and appropriate for displaying the American flag. The cost for the construction and materials is \$90,000. In addition to the 20 new poles, the cost includes construction surveying, installation, traffic control, wiring and lighting.

that recognizes the civilians and public safety personnel who lost their lives," said Ken Rukavina, Director of Community Development and Public Works/City Engineer. "We are launching a campaign to help raise the funds we need to complete this project and we hope the public will join us."

For those interested in being a part of the 9/11 Memorial Triangle fundraising campaign or to make a donation, please contact City Clerk Lauren Pettit at lpettit@pvestates.org.

"We are proud to have a memorial



RESOLVED LAWSUIT FOR THE PARKLANDS

PALOS VERDES ESTATES: On Friday, January 11, 2019, the City Council held a special meeting to consider a settlement agreement for the Parklands (Via Panorama) lawsuit involving the City of Palos Verdes Estates, the Palos Verdes Homes Association (PVHA), John Harbison and the Citizens for Enforcement of Parkland Covenants (CEPC), and the Luglianis.

During Friday's meeting, the Council heard public input from varying points of view regarding the settlement agreement. The City Attorney provided a comprehensive overview of the case history and explained the content of the proposed settlement agreement and reasons for the appeal. The City Council voted 4-1 to approve the settlement agreement. The meeting can be viewed on the City's website. www.pvestates.org/government/city-council/city-meetings

The City Council in its deliberations was mindful of the cost of further litigation, the possible potential pros and cons resulting from a trial, and the overall interests of bringing a divisive issue in the community to an amicable conclusion. The City Council agreed to the plaintiffs' request that the City be part of a comprehensive settlement so that all disputes could be resolved once and for all.

The City's obligations under the agreement are:

1. Accept the donation of any amount of parkland located in the City that is free of encroachments and otherwise complies with the applicable deed restrictions.
2. Cause deed restrictions commensurate with the Palos Verdes Estates 1940 Deed Restrictions to be imposed on the Bluff Cove Property so that it is subject to the same restrictions as other parkland held by the City.
3. Record a notice of vacation of duplicate open space easement imposed by Quitclaim Deeds referenced within the agreement.

The City pays no money under the agreement.

All other aspects of the settlement agreement pertain to matters among the Luglianis, John Harbison (including the CPEC and ROBE) and the PVHA.

The City Council reiterated its commitment to protecting the parklands and keeping them open and accessible to the public.

For more information on the settlement, please go to the City's website www.pvestates.org, click on "Government" on the top bar and then "Legal Matters" on the drop-down menu where you can read the signed settlement, read the Mayor's Statement and review a list of Frequently Asked Questions.



MARCH 5, 2019 GENERAL MUNICIPAL ELECTION – Get the facts!

Date of election: Tuesday, March 5, 2019

Polls open: 7:00 a.m. to 8:00 p.m. Find your polling place at:
<http://lavote.net/locator>.

The election will be conducted by Los Angeles County, who will print and mail the sample ballots, determine polling places and precinct officers, process absentee ballot applications and conduct the tabulation (canvass) of the votes.



Positions For Election

Three seats on the City Council that have terms expiring November, 2022 (3-year, 8-month terms)

Voter Registration

You may register to vote if you are:

A U.S. citizen; at least 16 years of age (to enable voting at the first election upon 18th birthday); not found mentally incompetent by a court of law, and not in prison or on parole for the conviction of a felony violation.

Voter Registration forms are available at: City Hall; Los Angeles County Clerk-Registrar/Recorder's Office (www.lavote.net); California Secretary of State's Office (www.sos.ca.gov); post offices and local libraries.

Register to Vote with the Los Angeles County Registrar-Recorder/County Clerk.

THE HOLIDAY SEASON IN PALOS VERDES ESTATES

We would like to say a special thank you to those who helped make the holidays in our coastal community a festive and beautiful season.

This year, the City of PVE was fortunate enough to have the annual Malaga Cove Tree Lighting Ceremony, the Lunada Bay Homeowners' Association's "Santa in the Park," the very first Christmas Sing-a-Long Concert and the traditional "Santa's Visit" on Christmas Eve in Malaga Cove.

Thank you to our sponsors Malaga Bank, Travers Tree Service, River Church of South Bay and Lunada Bay Homeowners' Association who made these events sparkle with cheer. We'd also like to extend a special 'thank you' to our very own Santa Claus, the Palos Verdes Estates Police and Public Works Department staff, and the L.A. County Fire Department who work very hard to keep these holiday traditions alive.

Until next year!



MEDIA SPOTLIGHT: PALOS VERDES ESTATES IN THE NEWS

October 22, 2018
Views per month: 273,400

DAILY BREEZE

SIGN UP FOR NEWSLETTERS
E-EDITION
SUBSCRIBE + SUBSCRIBER SERVICES

NEWS · CRIME + PUBLIC SAFETY

Palos Verdes Estates Police: 5 arrested on suspicion of 8 home invasion robberies in L.A. County

Five people suspected of stealing about \$1 million worth of loot were charged with 60 felony counts on Monday, Oct. 22 in connection to eight home invasion robberies targeting five cities in Los Angeles County.

Palos Verdes Estates Police looking into two home invasion robberies, one in the 700 block of Via La Cuesta on March 2 and another in the 1300 block of Via Coronel, identified five suspects who were arrested on Thursday, Oct. 18, according to a news release from the department.

It said authorities believe the individuals are associated with a South Los Angeles gang and are responsible for six other robberies in La Habra Heights, La Cañada Flintridge, Playa del Rey and Palmdale.

Officers recovered two firearms, jewelry and cash, as well as evidence of gang affiliation, according to the department's release. The people taken into custody were identified as Los

Angeles residents Kelyon Thomas, 45, Janalisa Estrada, 39, Dennis Coleman, 40, and Carlos Cisneros, 33; and Wilmington resident James Carmicle, 46.

RULES FOR LAWN SIGNS IN PALOS VERDES ESTATES

Residents often ask about the legalities of signage in our community. Signs can vary and include real estate, construction and political signage during and after election season. As a City, we respect the public's First Amendment right to the freedom of expression and are mindful of this protection. Please be mindful that taking signs from someone's property is a misdemeanor.

Regulations are in place in order to manage litter produced by unauthorized use and distribution of signs. Our goal is to preserve the natural scenic character and aesthetic beauty of the City, while also allowing community members to express their freedoms.

Common questions about signage include:

Does PVE allow lawn signs?

Yes we do. There are certain requirements that residents must adhere to, including:

- Lawn signs on private property are to be set back a minimum of 10 feet from the curb or edge of the roadway.
- Signs may not be posted on public property, such as parks, parkland, trees, sidewalks, street signs, public utility poles and medians.

I'm a realtor, how do I place my signs?

Real estate signs are to be placed a minimum of 10 feet from the edge of the roadway or curb adjacent to private property. All signs/postings affiliated with real estate sales are strictly prohibited on public property such as City parkland and street medians. The posting of commercial or non-profit advertising signs is strictly prohibited on public property. To recover real estate signs removed by the City, please contact Code Enforcement at (310) 378-0383.

How many signs are allowed on a property and what size?

Though the City's ordinances do not address the number of signs allowed per property, the Palos Verdes Home Association (PVHA) advises that:

- One sign may be displayed on an improved or unimproved (vacant) residential property.
- The size of the sign displayed shall not be larger than 18 inches x 30 inches. The sign frame must be a maximum of 2 inches x 2 inches.
- All signs on commercial buildings must be approved by the Palos Verdes Homes Association.

Who do I contact to report non-compliance?

The City encourages voluntary compliance and neighborhood cooperation and communication to maintain compliance with these sign regulations. We ask for any signage concern to be addressed amongst neighbors, before reporting it to the City.

For additional information on Palos Verdes Estates signage regulations, please refer to: Palos Verdes Estates Municipal Code [Chapter 8.20](#).

To obtain additional information, please contact the PVHA at (310) 373-6721 or the City at (310) 378-0383.



OPENGOV GIVES PUBLIC ACCESS TO CITY REVENUE AND EXPENDITURE DATA

The City of Palos Verdes Estates has recently expanded its OpenGov platform on its website, providing the community with easy access to the City's financial data.

The OpenGov Smart Government Cloud™ is an easy-to-use, cloud-based platform that provides the public with the City's financial data consistent with the City's Comprehensive Annual Financial Reports (CAFRs). The OpenGov platform includes line-item detail by Fund and provides re-

port functions for reviewing financial data over the past 10-years.

The City of PVE will continually update OpenGov with current data in the City's financial system. OpenGov provides years of data directly to the public "on demand" in spreadsheets eliminating manual efforts of assembling large amounts of data. OpenGov was launched prior to July 1, 2018 with vendor data. With this expanded data, the added information continues the City's commitment

to transparency. To better understand the the raw data in OpenGov, please refer to the bi-annual budgets, CAFRs and January 9, 2019 staff report, also available on the City's website.

For more information, please go to the City's website www.pvestates.org, click "Open Government" in the center of the home page, then "Financial Transparency (OpenGov Portal)" to use OpenGov and view a tutorial.

STOP BACKYARD BREEDING WITH MOSQUITOS AND OTHER INSECTS

With the recent rains, the City's Streets and Parks Department is asking its residents to take inventory of anything in their backyards that can hold water and create a breeding site for mosquitos and other insects.

Breeding sites that residents should know about, include:

- Flower pots and vases
- Plants that can hold water (bamboo)
- Plant saucers
- Buckets
- Clogged rain gutters
- Rain barrels
- Old tires
- Ponds
- Birdbaths
- Fountains
- Tree holes
- Tin cans



The Los Angeles County West Vector & Vector-Borne Disease Control District has created a pamphlet to provide residents with information they need to help with creating a defense plan and checklists for what to look for in one's backyard. Residents can pick up a pamphlet at City Hall or go to the Vector Control website, <http://www.lawestvector.org>

ECRWSS
 Postal Customer
 Palos Verdes Estates, CA 90274

City of Palos Verdes Estates
 340 Palos Verdes Drive West
 Palos Verdes Estates, California 90274

PRSRRT STD
 U.S. POSTAGE
 PAID
 TORRANCE, CA
 PERMIT #137