



Roadmap to City Services

Palos Verdes Estates

October 2, 2014

7:30 p.m. to 9:00 p.m.



[www@pvestates.org](http://www.pvestates.org)

ITINERARY

1. Welcome and introductions
2. City profile
3. Government structure – What is a City?
4. Fiscal position
5. Who do you call?
6. Connecting with the City
7. Questions?
8. Open House / City Hall Station Visits



City Profile

Square Miles:
4.74

Population:
13,600

of multi family
homes:
330

Miles of streets:
88

Median Age:
50 +
Median HH Income
\$152,000

of single family
homes:
4,955

City Parkland
849 Acres

Consistent & Strong
Property Values

Primary Employers:
Schools - Golf Club -
City - Real Estate

PVE Community



- Highly Educated
- Safe/Police Dept.
- Residential Focus
- Coastal
- Open Space/Parklands
- Urban Forest
- No Street Lights
- Fiscal Values

What is a City?



From the U.S. Constitution:

Tenth Amendment - The powers not delegated to the United States by the Constitution, nor prohibited by it to the States, are reserved to the States respectively, or to the people.

State Government



County governments (58 in CA)

- Provides:
- State mandated services and programs.
- Essential services to unincorporated areas.



City governments (88 in LA County)

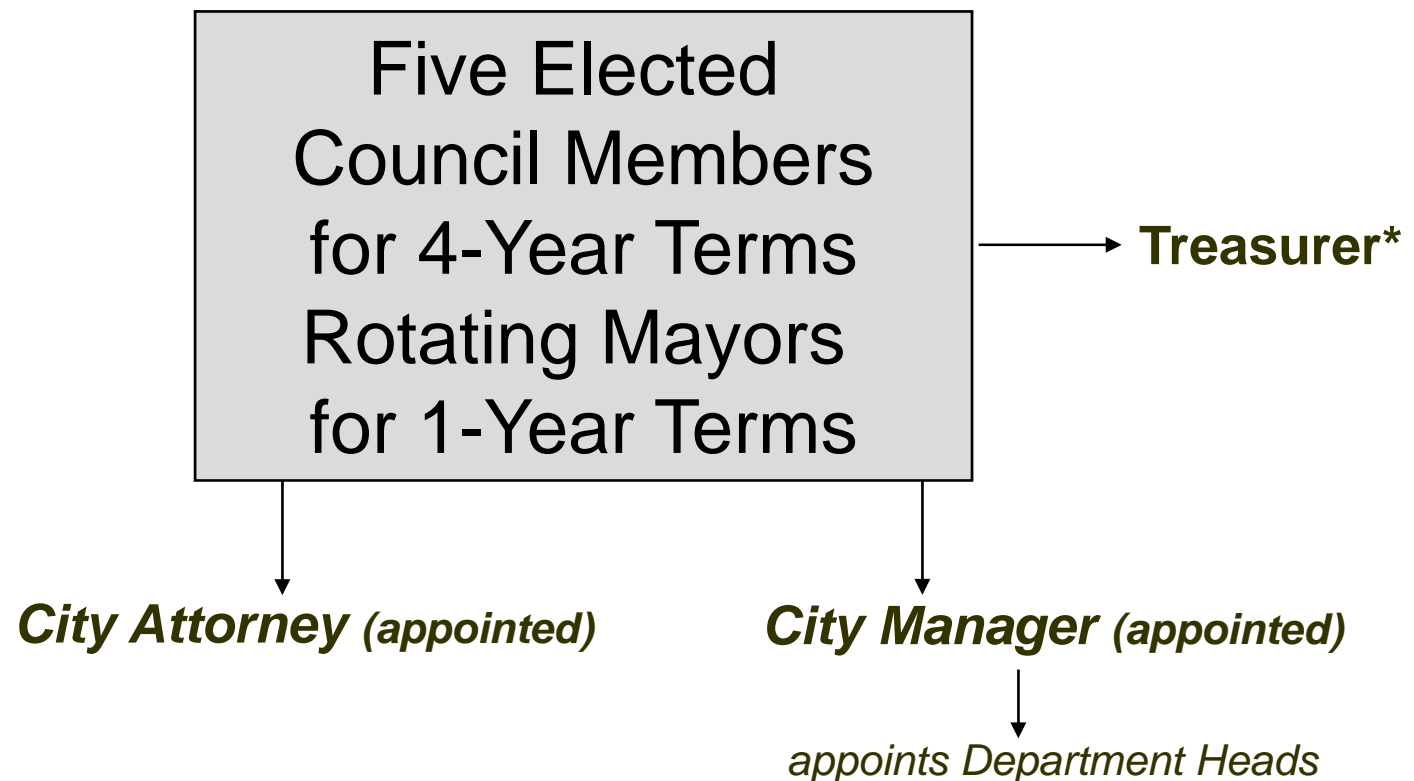
- A political subdivision to provide general local government for a specific population concentration in a defined area.

480+ Cities in California

Organizational structures of cities in CA

- Mayor/Council (Los Angeles)
- Council/Manager (Palos Verdes Estates)

Council/Manager form of government



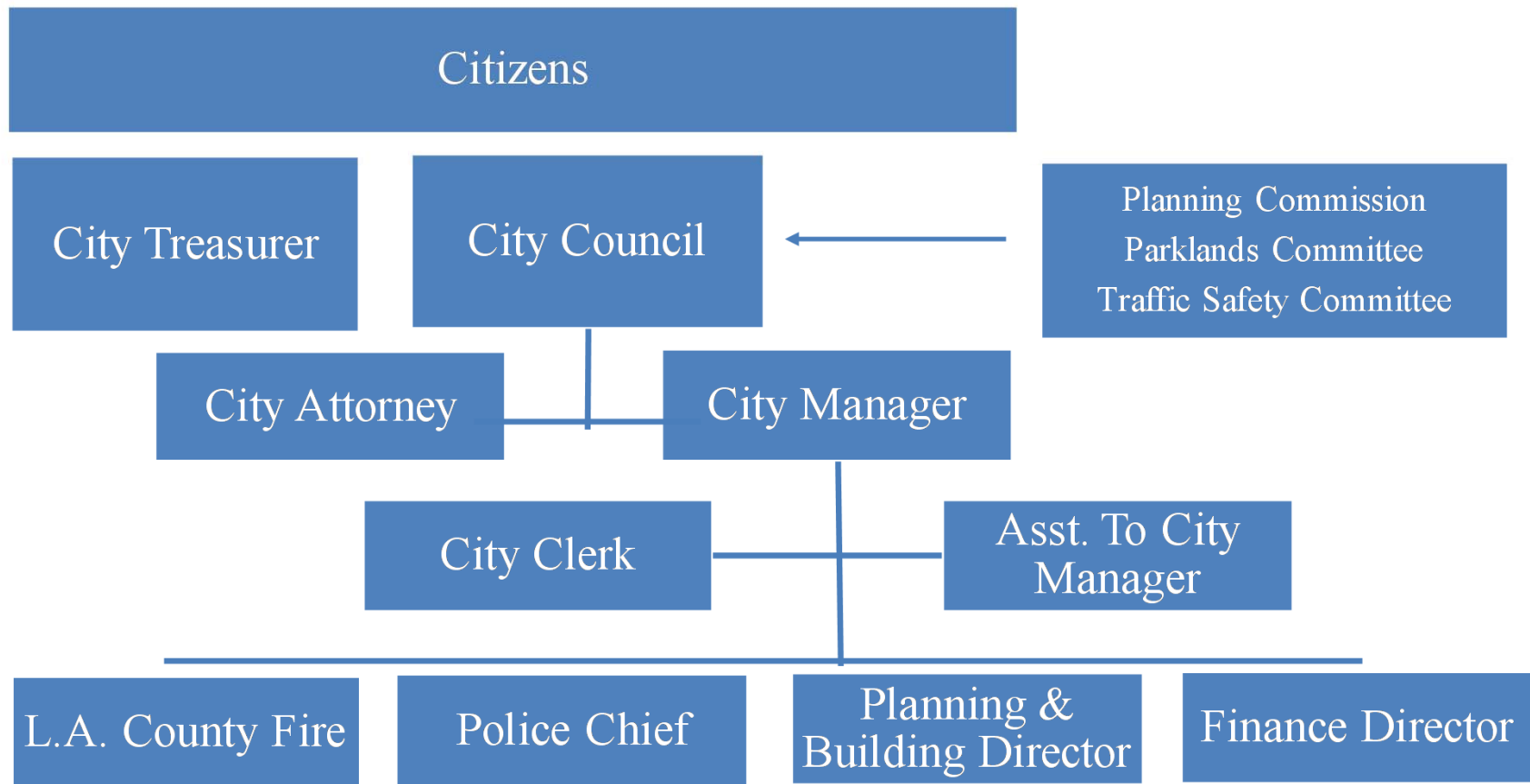
*Treasurer models vary from being elected to appointed

Council/Manager Form

- City Council serves as Board of Directors; sets policy.
- City Manager and City Attorney; appointed by and responsible to the elected City Council.
- City Manager responsible for implementing the policies established by the City Council, personnel, and presentation of annual budget.
- City Manager oversees the day-to-day City activities.
- City Attorney provides legal counsel to City Council and defense of City.



PVE Organizational Structure



City Partnerships

- **Contract Services:**

- Los Angeles County Fire
- Refuse service (trash collection, recycling, paper shredding, household hazardous waste collection, street sweeping)
- Building, Public Works, Engineering
- Tree service, Landscape Maintenance, Brush Clearance
- Animal Control / Dog Licenses

- **Other Local Agencies**

- California Joint Powers Insurance Authority
- Utility companies
- School District
- Library District
- South Bay Cities Council of Governments

Making “Cents” of City Finances



Where do City funds come from?

Where dollars go?

Where CALIFORNIA State dollars come from?

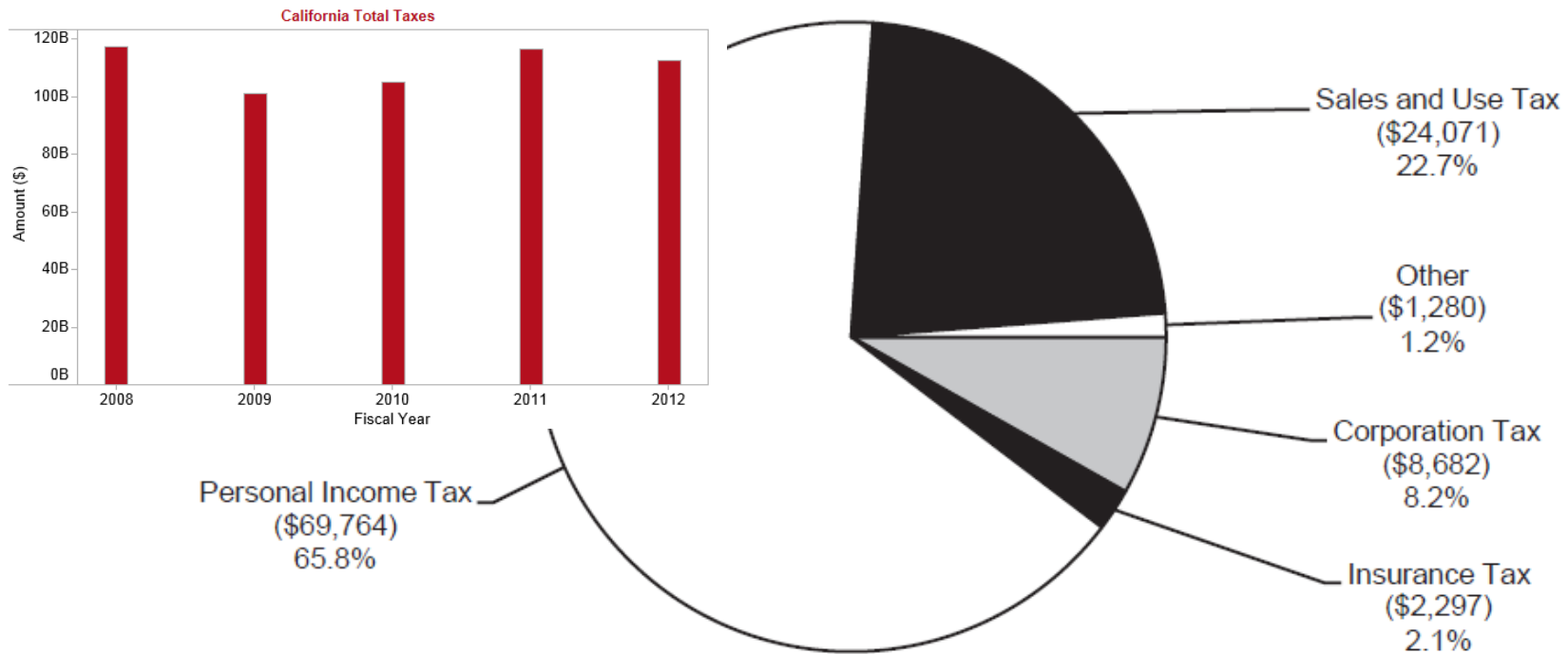
PVE is Nothing like the State in terms of Revenue

Figure SUM-05

2014-15

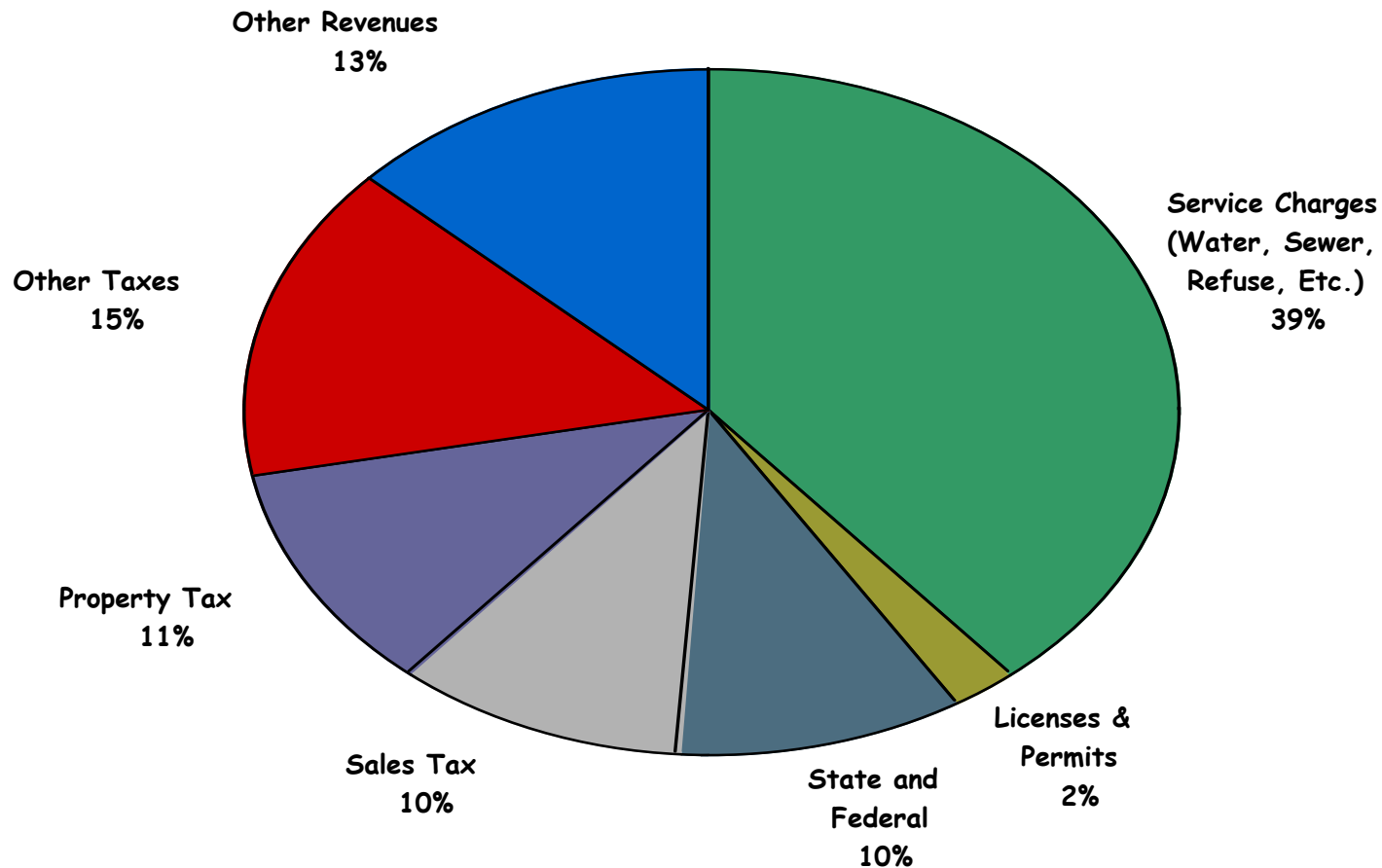
General Fund Revenues and Transfers^{1/}

(Dollars in Millions)



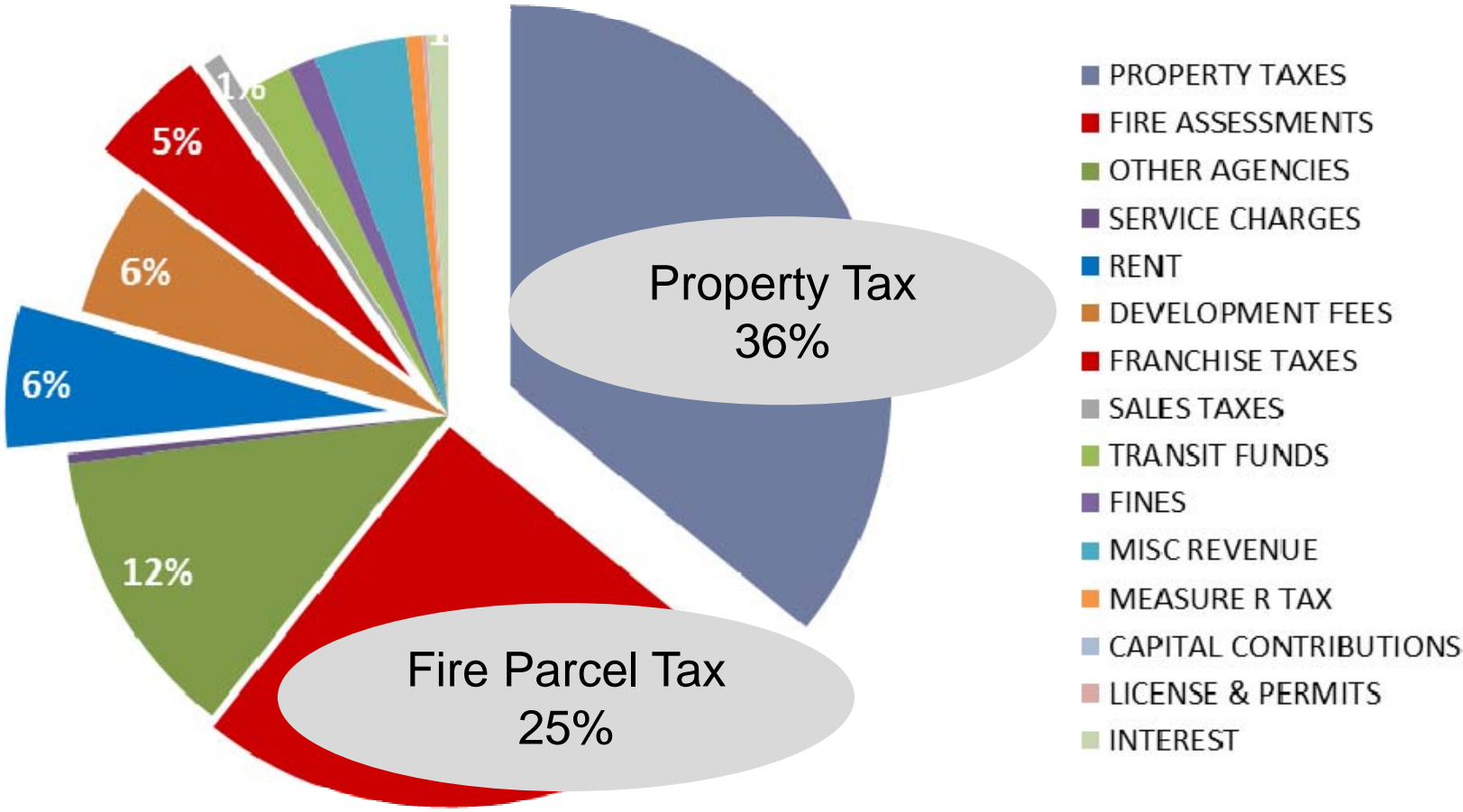
Where Most Cities dollars come from?

PVE is also unlike other cities in terms of Revenue



Where PVE dollars come from?

For PVE - Property Tax is Where all the action is!



Where PVE dollars come from?

Putting dollars to the percentages

PROPERTY TAXES	6,449,000	35.88%	✓
FIRE ASSESSMENTS	4,448,234	24.75%	✓
OTHER AGENCIES	2,227,700	12.39%	✓
SERVICE CHARGES	70,000	0.39%	
RENT	1,081,000	6.01%	✓
DEVELOPMENT FEES	1,034,000	5.75%	✓
FRANCHISE TAXES	912,000	5.07%	✓
SALES TAXES	150,000	0.83%	
TRANSIT FUNDS	374,000	2.08%	
FINES	209,000	1.16%	
MISC REVENUE	702,000	3.91%	
MEASURE R TAX	127,000	0.71%	
CAPITAL CONTRIBUTIONS	-	0.00%	
LICENSE & PERMITS	37,000	0.21%	
INTEREST	153,000	0.85%	
Total	17,973,934	100.00%	

14-15

Does all my Property tax go to the PVE?

Actually – only a small portion does

2009 ANNUAL PROPERTY TAX BILL 2009

CITY OF PALOS VERDES AND ALL OTHER TAXING AGENCIES IN LOS ANGELES COUNTY
SECURED PROPERTY TAX FOR FISCAL YEAR JULY 1, 2009 TO JUNE 30, 2010
 MARK J. SALAS, AGENT, TREASURER AND TAX COLLECTOR
 FOR ASSISTANCE CALL 1 (818) 746-1111 OR (818) 801-2111. ON THE INTERNET AT www.palosverdes.org

PROPERTY IDENTIFICATION
 ADDRESS: 5125 HOLY TRINITY 004 040 00 000
 COUNTY OF RECORD: 08 OF PALOS VERDES, CA
 SAME AS RECEIVED

MAILING ADDRESS
 [REDACTED]

ELECTRONIC FUND TRANSFER (EFT) NUMBER
 122 18 747 004 014 2 144 09 1070407 000 1
 FUND: 018830
 For More Information, Visit www.palosverdes.org or Call 1 (818) 746-1111
 OR VISIT www.palosverdes.org OR VISIT www.palosverdes.org

SPECIAL INFORMATION
 [REDACTED]

PROPERTY LOCATION AND PROPERTY DESCRIPTION
 TRACT # 7151 19' 100' [REDACTED]

AGREEMENTS AND OFFER
 REGION # 14 ENDS: 14810701
 SOUTH DALLAS OFFICE
 3901 S. MILLER STREET
 DALLAS, TEXAS 75219
 (972) 242-7701

AGCT. NO.: PRINT NO.: 007222 BILL ID: 440 700

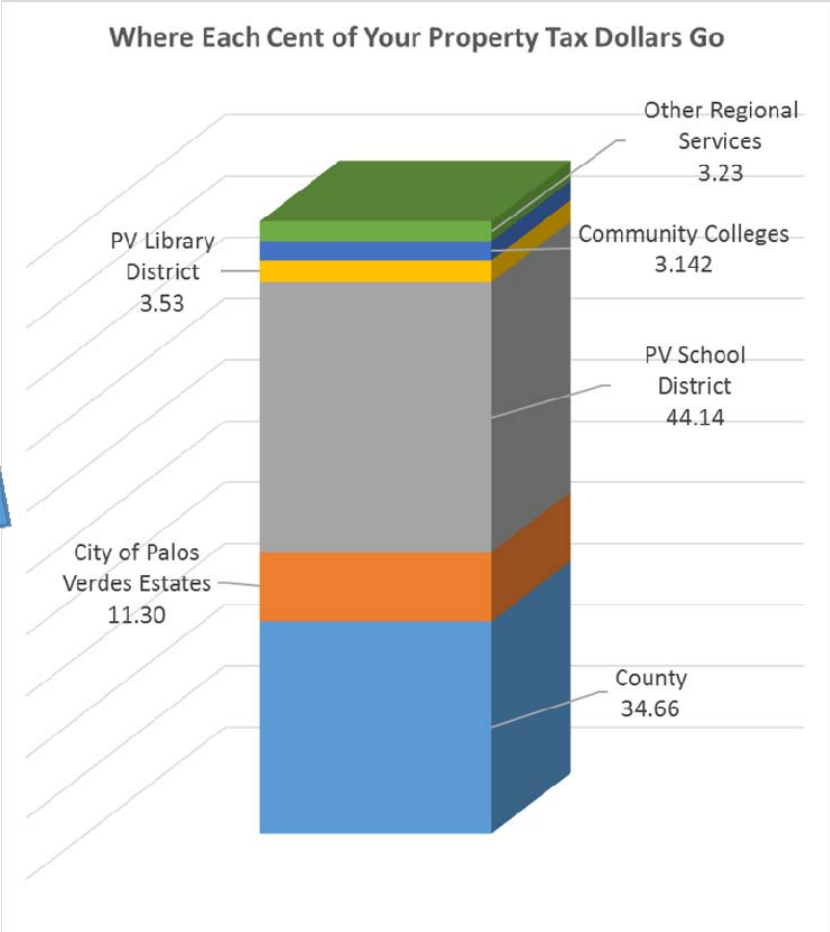
DETAIL OF TAXES DUE FOR 7577 006 000 00 000 31			
AGENCY	AGENCY PHONE NO.	RATE	AMOUNT
GENERAL TAX LEVY	AL. BUCKLEYS	1.00000	4,807.80
WATER DEVELOPMENT		.00000	20.07
WATER METER FEES		.00000	21.82
PLUMBING SERVICE		.00000	171.51
LANDFILL SERVICE		.02042	104.28
SEWER RECONSTRUCTION			
LANDSLIDE UNIT	(818) 844-0269		79.40
WATER SERVICE UNIT	(818) 377-0860		47.96
PUBLIC WORKS UNIT	(818) 370-0860		208.00
PUBLIC PARKS UNIT	(818) 370-0860		108.00
TRASH SERVICE UNIT	(818) 370-0860		40.50
FLORIDA UNIT	(818) 458-9183		40.45
TRASH SERVICE UNIT	(818) 370-0860		42.44
LANDSLIDE UNIT	(818) 844-0269		798.00
WATER SERVICE UNIT	(818) 377-0860		24.00
PUBLIC WORKS UNIT	(818) 370-0860		76.12
LANDSLIDE UNIT	(818) 844-0269		60.17
WATER SERVICE UNIT	(818) 377-0860		5.36

TOTAL TAXES DUE \$5,962.02
 FIRST INSTALLMENT TAXES DUE NOV. 1, 2009 \$2,978.81
 SECOND INSTALLMENT TAXES DUE FEB. 1, 2010 \$2,978.81

REAL YEAR 09-10 VALUATION INFORMATION

REAL YEAR 09-10	CURRENT ASSESSED VALUE	TAXABLE VALUE
LAND	387,011	387,011
IMPROVEMENTS	150,761	102,781
TOTAL	537,772	489,792
LESS EXEMPTION		7,000
TOTAL TAXABLE VALUE		482,792

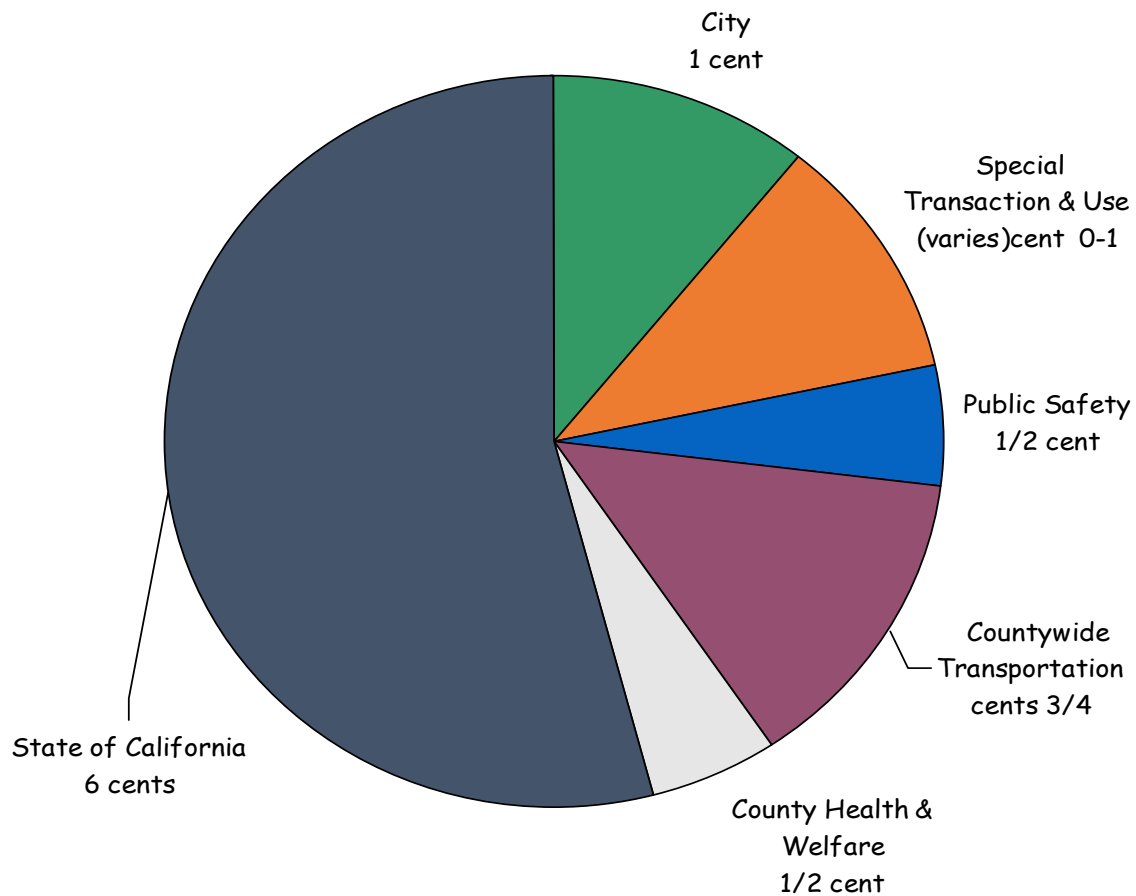
11.30 Cents per Dollar



\$6,449,000 - 36%

What about Sales Tax?

PVE Sales Tax activity is very small – and most \$ goes elsewhere

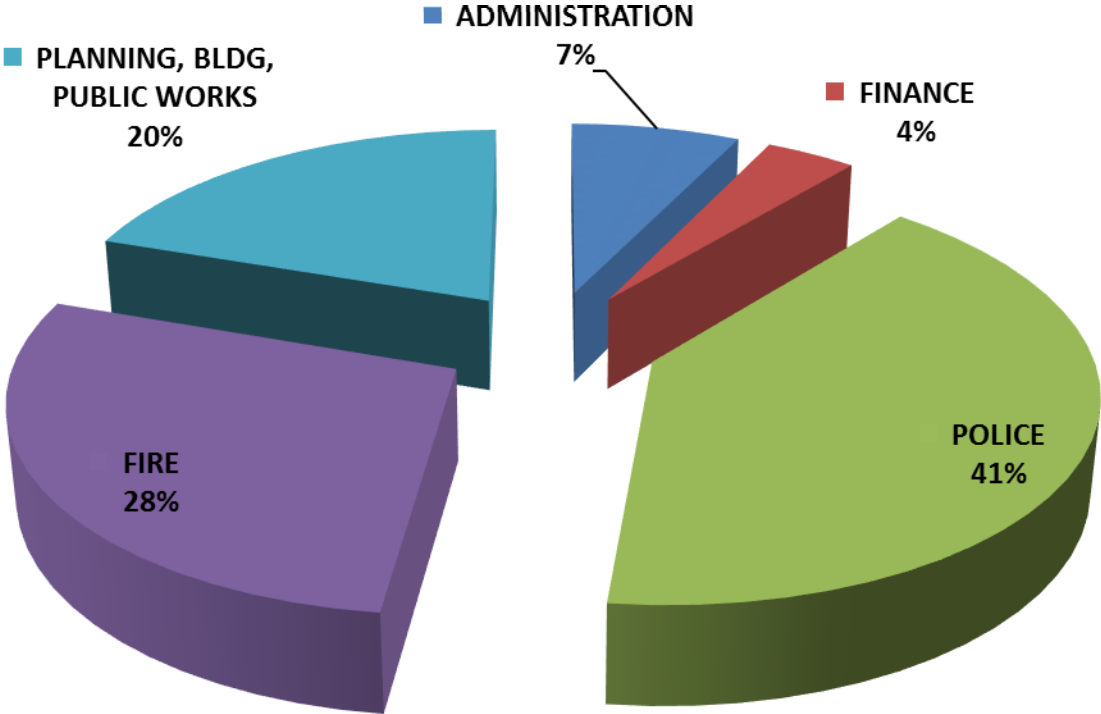


The City gets 1 cent out of the base 8.25 cents per sales dollar.

Thus, PVE gets 12% of each sales tax collection – 88% goes elsewhere.

How are Tax Dollars Used?

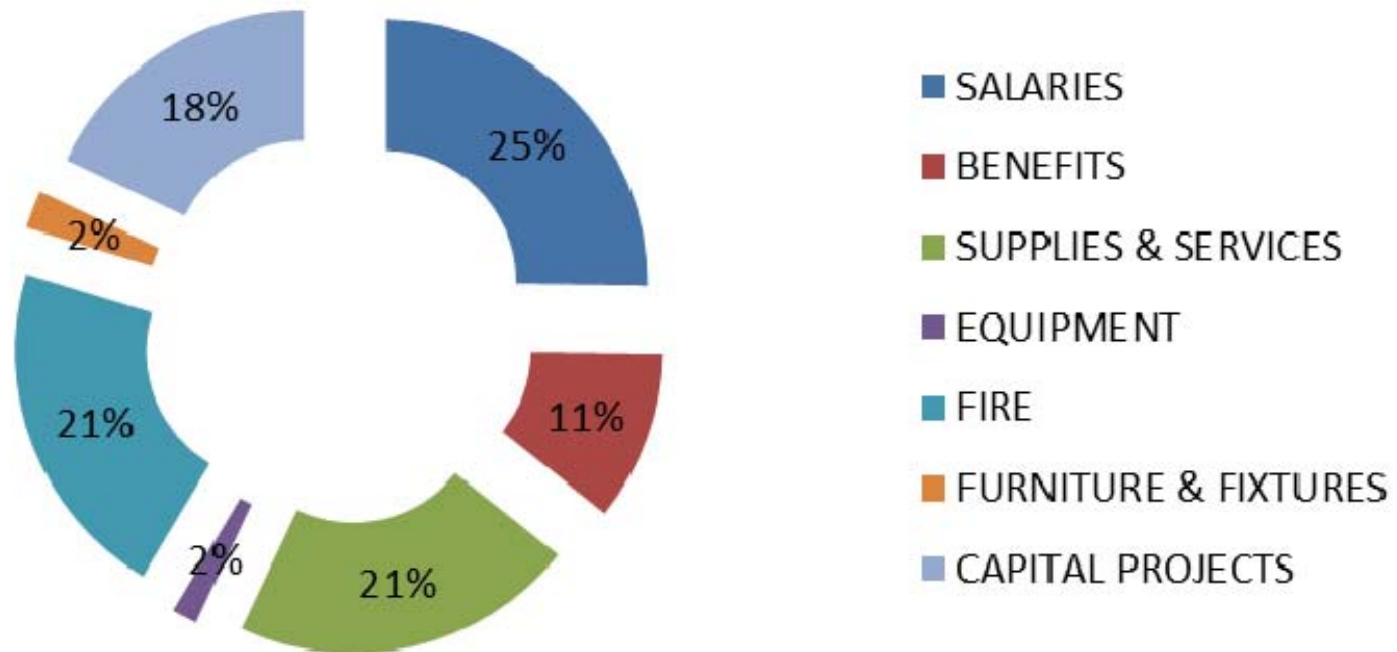
To keep the City Running – Mission Critical Needs



ADMINISTRATION	1,141,674	7%
FINANCE	611,469	4%
POLICE	6,418,685	41%
FIRE	4,458,230	28%
PLANNING, BLDG, PUBLIC WORKS	3,113,625	20%
Total 2014/15	15,743,683.00	100%

PVE Tax Operating Dollars by category

2014-15 Expenditures By Category - City Wide



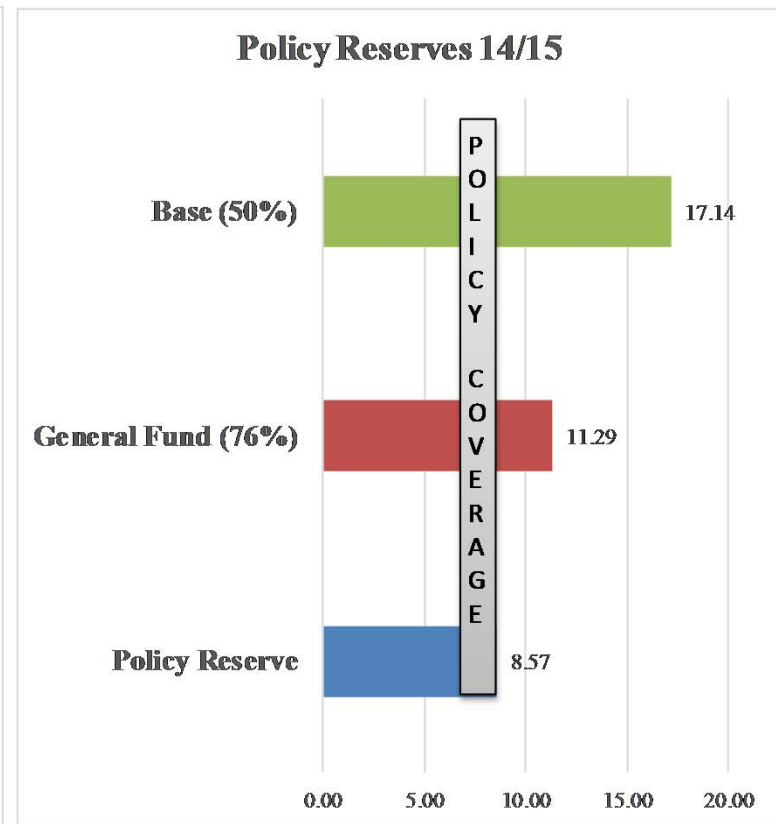
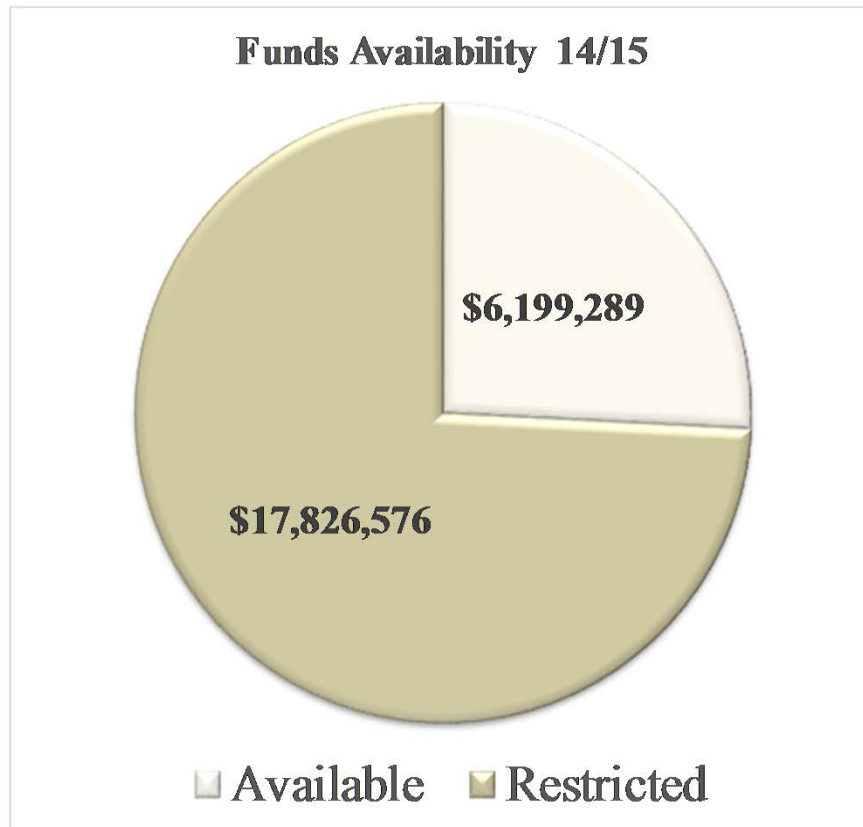
CAPITAL IMPROVEMENTS

Major Capital projects Approved in the 2014/16 Biennial Budget

	<u>2014/15</u>	<u>2015/16</u>
• Bluff Cove Deconstruction	\$1,000,000	\$ 400,000
• Road & Street Resurfacing	\$1,000,000	\$ 930,000
• City Hall Seismic Upgrades	\$ 800,000	
• City Hall ADA/Upgrades	\$ 200,000	
• Via Coronel/Zurlita Sewer	\$ 200,000	
• General Sewer		\$ 175,000
• Reflective Roadway Signs	\$ 35,000	\$ 115,000
• Curbs/Gutters	\$ 170,000	
• Enhanced Weed Abatement	\$ 125,000	\$ 125,000

14-15	\$3,789,000
<u>15-16</u>	<u>\$2,116,500</u>
	\$5,906,000

FISCAL PRUDENCE



\$8.57 Mil in Rainy Day Funds

NUMBERS AT YOUR FINGERTIPS

The screenshot shows a web browser window displaying the City of Palos Verdes Estates website. The browser's address bar shows the URL <http://www.pvestates.org/index.aspx?page=212>. The website header includes the title "CITY OF PALOS VERDES ESTATES" and navigation links for "Documents Online", "Links", "Site Map", and "Contact Us". The main navigation menu includes "HOME", "ABOUT PVE", "CITY GOVERNMENT", "DEPARTMENTS & SERVICES", and "I WANT TO...". A search bar is located to the right of the navigation menu.

The "DEPARTMENTS & SERVICES" menu is expanded, showing a sidebar with the following items:

- Finance
- FY 14/15 - 15/16 Adopted Budget
- Financial Reports
- FAQ's
- Contacts

The main content area displays the "FY 14/15 - 15/16 Adopted Budget" page. The breadcrumb trail is "Departments & Services > Finance > FY 14/15 - 15/16 Adopted Budget". The page title is "FY 14/15 - 15/16 Adopted Budget". There are "Share & Bookmark" and "Print" icons.

The page features a graphic with the text "City of Palos Verdes Estates Adopted Budget & Capital Plan FY 2014/15 - 2015/16" and a green pencil. Below the graphic is a link for "Public Hearing Budget PowerPoint Presentation".

A table of contents for the "FY 14/15 - 15/16 Adopted Biennial Budget" is provided:

Introduction	Message	Highlights
What We Have	What We Take In	What we Use
Admin	Finance	Police
Paramedic & Fire	Planning, Bldg. & Public Wks	Other Funds & Equip
Capital Projects	Authorized Positions	Property Tax Metrics
Assumptions	Budget Requests	Glossary
Resolutions		

FY 14/16 Budget Overview

GENERAL FUND

Balanced Operations ✓
Services Maintained
Needs Evaluated
Reserve Levels Preserved ✓

PEOPLE

Staffing Reorganization Realized
Contract Planner Brought In house
59 Authorized Positions
Updated Pension Rates Included ✓
Sustainable Cost Levels Assumed
Pension Reform in Play

CAPITAL

\$5.9M Capital Improvements ✓
\$570K Replaced Equipment
Initiated a Formal Capital Plan
Focus on - Quality of Life - Safety ✓
Technology - Organization ✓

HIGHLIGHTS

Identifies Long Term Policy Issues

Revised Document Presentation with an Emphasis on Relevance & Needs

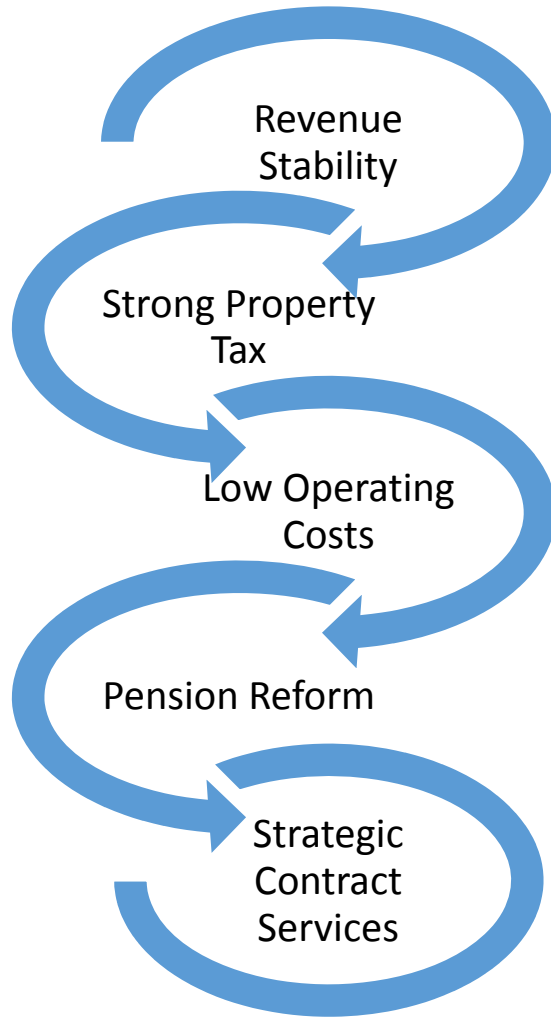
Operationally Balanced Biennial Financial Plan

Advances: Training - Organizational Continuity - Best Practices ✓

Focus on Infrastructure and Capital Improvements

Investment in Equipment & Technology Priorities

FISCAL STRENGTHS - CHALLENGES



PVE CITY ELECTED OFFICIALS



Mayor Ellen Perkins
eperkins@pvestates.org



Mayor Pro-Tem Rosemary Humphrey
rhumphrey@pvestates.org



Councilmember George Bird
gbird@pvestates.org



Councilmember Jim Goodhart
jgoodhart@pvestates.org



Councilmember John Rea
jrea@pvestates.org



City Treasurer Joseph Sherwood
jsherwood@pvestates.org

PVE MANAGEMENT TEAM



Anton Dahlerbruch – City Mgr.



Jeff Kepley – Police Chief



Alexa Davis – Asst. to the City Mgr.



Vickie Kroneberger – City Clerk



Russ Morreale – Finance Director



Sheri Repp – Planning & Bldg. Director

HOURS OF OPERATION



Key Hours and Telephone Numbers

SERVICE AREA	HOURS OF OPERATION	TEL NUMBER
Police/Fire Emergency Calls:	24 hours	911
City Hall:	8:00 a.m. to 5:00 p.m. Mon - Fri	310.378.0383
Police (non emergency)	24 hours	310.378.4211
Police Hearing Impaired Line:	24 Hours	310.373.8018
Fire Station 2 (non emergency)	24 Hours	310.373.6539
Ambulance (McCormick)	24 Hours (non-emergency)	888.349.8944
Trash Services (Athens)		888.336.6100
Cal Water		310.257.1400
Southern Calif. Edison (Electric)		800.655.4555
Southern California Gas Company		800.427.2200

Building & Planning City Hall Counter Hours

Monday - Friday

8:00 a.m to 10.00 a.m.

WHEN DO WE MEET



City Public Meeting Schedule

City Council *	Monthly 2nd and 4th Tuesday	7:30 p.m.
Planning Commission **	Monthly 3rd Tuesday	6:30 p.m.
Parklands Committee	Monthly 2nd Monday	7:30 p.m.
Traffic Safety Committee	Monthly 2nd Wednesday	7:30 p.m.

All meetings in City Hall Council Chambers unless otherwise posted

* City Council Meetings broadcast on Cox (Channel 35) two weeks after meeting Wednesdays 7:30 p.m.

** Planning Commission meetings broadcast on Cox (Channel 35) two weeks after meeting Saturdays 10:00 a.m.

HOW DO WE CONNECT

www@pvestates.org



WEB PAGE

NEWSLETTER

NEWSLETTER

WEB CALENDAR

CONTACT US

E NEWS

NEIGHBORHOOD WATCH

NIXLE

Next Getting to Know your City event

Planning and Development

When: October 16, 2014, 7:30 p.m. to 9:00 p.m.

Where: City Council Chambers

The qualities of the City and its unique character result from its historical roots, planning processes and building/zoning requirements while the City's future rests, in part, on the City's response to pressures for change - changes in the demand for services, the physical and techno-logical environment, and demographics. To discuss where the City has been, where it is, and where it is going, a moderated panel discussion will take place featuring a variety of individuals with knowledge of the City's past, present and vision of the future.

City Hall Self-Guided Tour

- Building and Safety (Sheri - Donna)
- Planning
- Code Enforcement
- Engineering (Jack)
- Administration (Vickie/Tony)
 - City Clerk's office
 - City Manager's office
 - Special Event permits
- Finance (Lori/Russ)

